

Anti-SRPX1 Antibody

Catalog Number: A10454

About SRPX

SRPX1 was initially identified as a candidate gene for X-linked retinitis pigmentosa and is overexpressed in the trabecular network of the eye in glaucoma conditions. Its expression is significantly downregulated in a number cancer cell lines and malignant tumor tissues and its ectopic expression induces apoptosis through the endoplasmic reticulum and the activation of caspase-12, -9, and -3, indicating that it can function as a tumor suppressor. SRPX1 is also involved with the regulation of autophagy under low serum conditions and can associate with Rab24, a member of the Rab GTPase protein family that is involved in autophagy. This association of SRPX1 with Rab24 is enhanced during autophagy.

Overview

Product Name	Anti-SRPX1 Antibody
Reactive Species	Human, Mouse, Rat
Description	Boster Bio Anti-SRPX1 Antibody (Catalog # A10454). Tested in ELISA, WB, IHC-P, IF applications. This antibody reacts with Human, Mouse, Rat.
Application	ELISA, IF, IHC-P, WB
Clonality	Polyclonal
Formulation	SRPX1 Antibody is supplied in PBS containing 0.02% sodium azide.
Storage Instructions	Antibody can be stored at 4°C up to one year. Antibodies should not be exposed to prolonged high temperatures.
Host	Rabbit
Uniprot ID	P78539

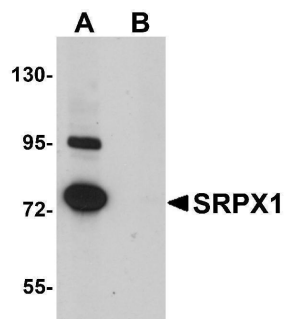
Technical Details

Immunogen	SRPX1 antibody was raised against a 13 amino acid synthetic peptide from near the amino terminus of human SRPX1. The immunogen is located within amino acids 30 - 80 of SRPX1.
Predicted Reactive Species	Bovine, Mouse, Rat
Isotype	IgG
Form	Liquid
Concentration	1 mg/mL
Purification	SRPX1 Antibody is affinity chromatography purified via peptide column.
Suggested Dilutions	SRPX1 antibody can be used for detection of SRPX1 by Western blot at 0.25 ug/mL. Antibody can also be used for immunohistochemistry starting at 5 ug/mL. For immunofluorescence start at 20

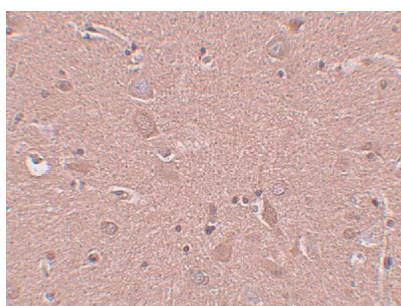
ug/mL.

Antibody validated: Western Blot in human samples; Immunohistochemistry in human samples and Immunofluorescence in human samples. All other applications and species not yet tested. Optimal dilutions for each application should be determined by the researcher.

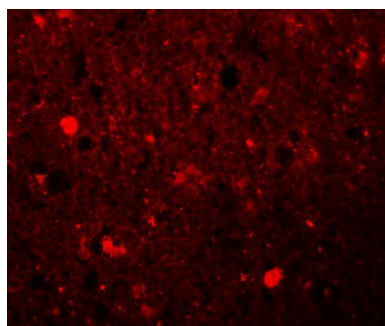
Anti-SRPX1 Antibody (A10454) Images



Western blot analysis of SRPX1 in SK-N-SH cell lysate with SRPX1 antibody at 0.25 ug/mL in (A) the absence and (B) the presence of blocking peptide.



Immunohistochemistry of SRPX1 in human brain tissue with SRPX1 antibody at 5 ug/mL.



Immunofluorescence of SRPX1 in human brain tissue with SRPX1 antibody at 20 ug/mL.

Submit a product review to Biocompare.com

Submit a review of this product to Biocompare.com to receive a \$20 Amazon.com giftcard! Your reviews help your fellow scientists make the right decisions. Thank you for your contribution.



Anti-SRPX1 Antibody

For Research Use Only. Not for use in diagnostic procedures.