

Anti-TEM4 ARHGEF17 Antibody

Catalog Number: A10510

About ARHGEF17

Rho GTPases, which are activated by specific guanine-nucleotide exchange factors (GEFs), play pivotal roles in several cellular functions. TEM4, encoding a protein containing 1510 amino acids, contains a RhoGEF-specific Dbl homology (DH) domain but lacks their typical pleckstrin homology domain. TEM4 is a Rho-specific GEF with novel structural and regulatory properties and predominant expression in the heart. It couples tyrosine kinase signals with the activation of the rho/rac GTPases, thus leading to cell differentiation and/or proliferation. Elevated levels of TEM4, TEM5, TEM6, TEM7 and TEM7R were also raised in breast cancer tissues. TEM4 could also prove to be useful targets therapeutically.

Overview

Product Name	Anti-TEM4 ARHGEF17 Antibody
Reactive Species	Human
Description	Boster Bio Anti-TEM4 ARHGEF17 Antibody (Catalog # A10510). Tested in ELISA, WB, IHC-P applications. This antibody reacts with Human.
Application	ELISA, IHC-P, WB
Clonality	Polyclonal
Formulation	TEM4 Antibody is supplied in PBS containing 0.02% sodium azide.
Storage Instructions	TEM4 antibody can be stored at 4°C for three months and -20°C, stable for up to one year. Avoid repeated freeze-thaw cycles. Antibodies should not be exposed to prolonged high temperatures.
Host	Rabbit
Uniprot ID	Q96PE2

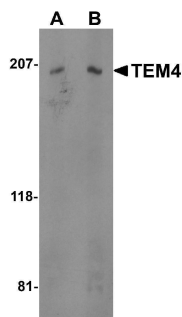
Technical Details

Immunogen	TEM4 antibody was raised against a 18 amino acid synthetic peptide near the center of human TEM4. The immunogen is located within amino acids 910 - 960 of TEM4.
Predicted Reactive Species	Mouse
Isotype	IgG
Form	Liquid
Concentration	1 mg/mL
Purification	TEM4 Antibody is affinity chromatography purified via peptide column.
Suggested Dilutions	TEM4 antibody can be used for detection of TEM4 by Western blot at 0.5 - 1 ug/mL. Antibody can also be used for immunohistochemistry starting at 2.5 ug/mL. For immunofluorescence start at 20

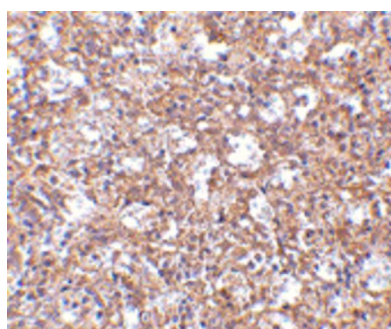
ug/mL.

Antibody validated: Western Blot in human samples and Immunohistochemistry in human samples.
All other applications and species not yet tested. Optimal dilutions for each application should be determined by the researcher.

Anti-TEM4 ARHGEF17 Antibody (A10510) Images



Western blot analysis of TEM4 in Jurkat cell lysate with TEM4 antibody at (A) 0.5 and (B) 1 ug/mL.



Immunohistochemistry of TEM4 in human spleen tissue with TEM4 antibody at 2.5 ug/mL.

Submit a product review to [Biocompare.com](https://www.biocompare.com)

Submit a review of this product to [Biocompare.com](https://www.biocompare.com) to receive a \$20 Amazon.com giftcard! Your reviews help your fellow scientists make the right decisions. Thank you for your contribution.



Anti-TEM4 ARHGEF17 Antibody

For Research Use Only. Not for use in diagnostic procedures.