

Anti-PARP16 Antibody

Catalog Number: A10545-1

About PARP16

Enables kinase binding activity; pentosyltransferase activity; and protein serine/threonine kinase activator activity. Involved in IRE1-mediated unfolded protein response; negative regulation of cytoplasmic translation; and protein auto-ADP-ribosylation. Located in endoplasmic reticulum tubular network and nuclear envelope.

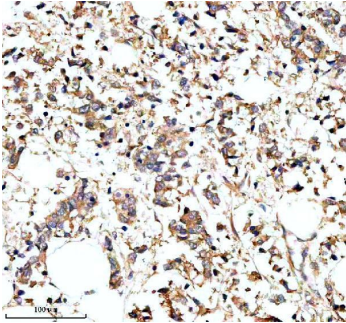
Overview

| | |
|----------------------|---|
| Product Name | Anti-PARP16 Antibody |
| Reactive Species | Human |
| Description | Boster Bio Anti-PARP16 Antibody catalog # A10545-1. Tested in IHC, Flow Cytometry, ELISA applications. This antibody reacts with Human. The brand Picoband indicates this is a premium antibody that guarantees superior quality, high affinity, and strong signals with minimal background in Western blot applications. Only our best-performing antibodies are designated as Picoband, ensuring unmatched performance. |
| Application | ELISA, Flow Cytometry, IHC |
| Clonality | Polyclonal |
| Formulation | Each vial contains 4 mg Trehalose, 0.9 mg NaCl, 0.2 mg Na ₂ HPO ₄ . |
| Storage Instructions | At -20°C for one year from date of receipt. After reconstitution, at 4°C for one month. It can also be aliquotted and stored frozen at -20°C for six months. Avoid repeated freezing and thawing. |
| Host | Rabbit |
| Uniprot ID | Q8N5Y8 |

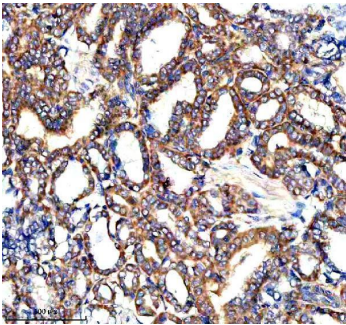
Technical Details

| | |
|---------------------|---|
| Immunogen | E.coli-derived human PARP16 recombinant protein (Position: A9-Y254). Human PARP16 shares 92.3% and 90.2% amino acid (aa) sequence identity with mouse and rat PARP16, respectively. |
| Form | Lyophilized |
| Concentration | Adding 0.2 ml of distilled water will yield a concentration of 500 ug/ml. |
| Purification | Immunogen affinity purified. |
| Suggested Dilutions | Immunohistochemistry(Paraffin-embedded Section), 2-5 ug/ml, Human Flow Cytometry (Fixed), 1-3 ug/1x10 ⁶ cells, Human ELISA, 0.1-0.5 ug/ml |

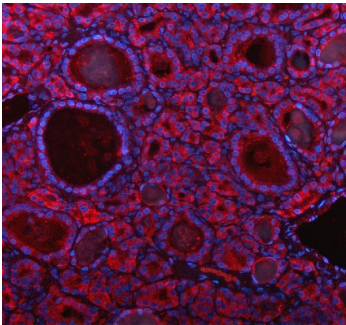
Anti-PARP16 Antibody (A10545-1) Images



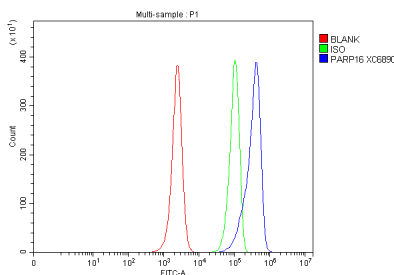
IHC analysis of PARP16 using anti-PARP16 antibody (A10545-1). PARP16 was detected in a paraffin-embedded section of human breast cancer tissue. Heat mediated antigen retrieval was performed in EDTA buffer (pH 8.0, epitope retrieval solution). The tissue section was blocked with 10% goat serum. The tissue section was then incubated with 2 ug/ml rabbit anti-PARP16 Antibody (A10545-1) overnight at 4°C. Peroxidase Conjugated Goat Anti-rabbit IgG was used as secondary antibody and incubated for 30 minutes at 37°C. The tissue section was developed using HRP Conjugated Rabbit IgG Super Vision Assay Kit (Catalog # SV0002) with DAB as the chromogen.



IHC analysis of PARP16 using anti-PARP16 antibody (A10545-1). PARP16 was detected in a paraffin-embedded section of human thyroid cancer tissue. Heat mediated antigen retrieval was performed in EDTA buffer (pH 8.0, epitope retrieval solution). The tissue section was blocked with 10% goat serum. The tissue section was then incubated with 2 ug/ml rabbit anti-PARP16 Antibody (A10545-1) overnight at 4°C. Peroxidase Conjugated Goat Anti-rabbit IgG was used as secondary antibody and incubated for 30 minutes at 37°C. The tissue section was developed using HRP Conjugated Rabbit IgG Super Vision Assay Kit (Catalog # SV0002) with DAB as the chromogen.



IF analysis of PARP16 using anti-PARP16 antibody (A10545-1). PARP16 was detected in a paraffin-embedded section of human thyroid cancer tissue. Heat mediated antigen retrieval was performed in EDTA buffer (pH 8.0, epitope retrieval solution). The tissue section was blocked with 10% goat serum. The tissue section was then incubated with 5 ug/mL rabbit anti-PARP16 Antibody (A10545-1) overnight at 4°C. Cy3 Conjugated Goat Anti-Rabbit IgG (BA1032) was used as secondary antibody at 1:500 dilution and incubated for 30 minutes at 37°C. The section was counterstained with DAPI. Visualize using a fluorescence microscope and filter sets appropriate for the label used.



Flow Cytometry analysis of HL-60 cells using anti-PARP16 antibody (A10545-1). Overlay histogram showing HL-60 cells stained with A10545-1 (Blue line). To facilitate intracellular staining, cells were fixed with 4% paraformaldehyde and permeabilized with permeabilization buffer. The cells were blocked with 10% normal goat serum. And then incubated with rabbit anti-PARP16 Antibody (A10545-1, 1 ug/1x10⁶ cells) for 30 min at 20°C. DyLight®488 conjugated goat anti-rabbit IgG (BA1127, 5-10 ug/1x10⁶ cells) was used as secondary antibody for 30 minutes at 20°C. Isotype control antibody (Green line) was rabbit IgG (1 ug/1x10⁶) used under the same conditions. Unlabelled sample without incubation with primary antibody and secondary antibody

(Red line) was used as a blank control.

Submit a product review to Biocompare.com

Submit a review of this product to Biocompare.com to receive a \$20 Amazon.com giftcard! Your reviews help your fellow scientists make the right decisions. Thank you for your contribution.



Anti-PARP16 Antibody

For Research Use Only. Not for use in diagnostic procedures.