

Anti-POLR1A Antibody

Catalog Number: A10549

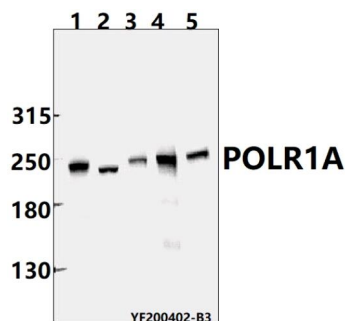
Overview

Product Name	Anti-POLR1A Antibody
Reactive Species	Human, Mouse, Rat
Description	Boster Bio Anti-POLR1A Antibody catalog # A10549. Tested in WB applications. This antibody reacts with Human,Mouse,Rat.
Application	WB
Clonality	Polyclonal
Formulation	Rabbit IgG, 1mg/ml in PBS with 0.02% sodium azide, 50% glycerol, pH7.2
Storage Instructions	Store at -20°C for one year. For short term storage and frequent use, store at 4°C for up to one month. Avoid repeated freeze-thaw cycles.
Host	Rabbit
Uniprot ID	O95602

Technical Details

Immunogen	A synthetic peptide corresponding to residues in Human POLR1A.
Isotype	IgG
Form	Liquid
Concentration	1 mg/ml
Purification	The antibody was affinity-purified from rabbit antiserum by affinity-chromatography using epitope-specific immunogen and the purity is > 95% (by SDS-PAGE).
Suggested Dilutions	WB: 1:500-1:1000

Anti-POLR1A Antibody (A10549) Images



Western blot (WB) analysis of POLR1A pAb at 1:1000 dilution
Lane1:HeLa whole cell lysate(40ug) Lane2:MCF-7 whole cell lysate(40ug) Lane3:3T3-L1 whole cell lysate(40ug)
Lane4:Raw264.7 whole cell lysate (40ug) Lane5:PC12 whole cell lysate (40ug)

Submit a product review to Biocompare.com

Submit a review of this product to Biocompare.com to receive a \$20 Amazon.com giftcard! Your reviews help your fellow scientists make the right decisions. Thank you for your contribution.



Anti-POLR1A Antibody

For Research Use Only. Not for use in diagnostic procedures.