

## Anti-POLR1A Antibody Picoband®

Catalog Number: A10549-1

### About POLR1A

DNA-directed RNA polymerase I subunit RPA1 is an enzyme that in humans is encoded by the POLR1A gene. The protein encoded by this gene is the largest subunit of the RNA polymerase I complex. The encoded protein represents the catalytic subunit of the complex, which transcribes DNA into ribosomal RNA precursors. Defects in this gene are a cause of the Cincinnati type of acrofacial dysostosis.

### Overview

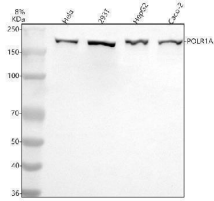
Product Name	Anti-POLR1A Antibody Picoband®
Reactive Species	Human
Description	Boster Bio Anti-POLR1A Antibody Picoband® catalog # A10549-1. Tested in WB, ELISA applications. This antibody reacts with Human. The brand Picoband indicates this is a premium antibody that guarantees superior quality, high affinity, and strong signals with minimal background in Western blot applications. Only our best-performing antibodies are designated as Picoband, ensuring unmatched performance.
Application	ELISA, WB
Clonality	Polyclonal
Formulation	Each vial contains 4 mg Trehalose, 0.9 mg NaCl, 0.2 mg Na <sub>2</sub> HPO <sub>4</sub> .
Storage Instructions	At -20°C for one year from date of receipt. After reconstitution, at 4°C for one month. It can also be aliquotted and stored frozen at -20°C for six months. Avoid repeated freezing and thawing.
Host	Rabbit
Uniprot ID	O95602

### Technical Details

Immunogen	E.coli-derived human POLR1A recombinant protein (Position: E607-R1720). Human POLR1A shares 86.3% and 87.3% amino acid (aa) sequence identity with mouse and rat POLR1A, respectively.
Recommended Detection Systems	Boster recommends Enhanced Chemiluminescent Kit with anti-Rabbit IgG (EK1002) for Western blot.
Form	Lyophilized
Concentration	Adding 0.2 ml of distilled water will yield a concentration of 500 ug/ml.
Purification	Immunogen affinity purified.
Suggested Dilutions	Western blot, 0.25-0.5 ug/ml, Human

	ELISA, 0.1-0.5 ug/ml
--	----------------------

## Anti-POLR1A Antibody Picoband® (A10549-1) Images



Western blot analysis of POLR1A using anti-POLR1A antibody (A10549-1). Electrophoresis was performed on a 5-20% SDS-PAGE gel at 70V (Stacking gel) / 90V (Resolving gel) for 2-3 hours. The sample well of each lane was loaded with 30 ug of sample under reducing conditions. Lane 1: human Hela whole cell lysates, Lane 2: human 293T whole cell lysates, Lane 3: human HepG2 whole cell lysates, Lane 4: human Caco-2 whole cell lysates. After electrophoresis, proteins were transferred to a nitrocellulose membrane at 150 mA for 50-90 minutes. Blocked the membrane with 5% non-fat milk/TBS for 1.5 hour at RT. The membrane was incubated with rabbit anti-POLR1A antigen affinity purified polyclonal antibody (A10549-1) at 0.5 ug/mL overnight at 4°C, then washed with TBS-0.1%Tween 3 times with 5 minutes each and probed with a goat anti-rabbit IgG-HRP secondary antibody at a dilution of 1:5000 for 1.5 hour at RT. The signal is developed using an Enhanced Chemiluminescent detection (ECL) kit (Catalog # EK1002) with Tanon 5200 system. A specific band was detected for POLR1A at approximately 195 kDa. The expected band size for POLR1A is at 195 kDa.

### Submit a product review to Biocompare.com

Submit a review of this product to Biocompare.com to receive a \$20 Amazon.com giftcard! Your reviews help your fellow scientists make the right decisions. Thank you for your contribution.



Anti-POLR1A Antibody

For Research Use Only. Not for use in diagnostic procedures.