

Anti-RPL35 (M91) Antibody

Catalog Number: A10561-1

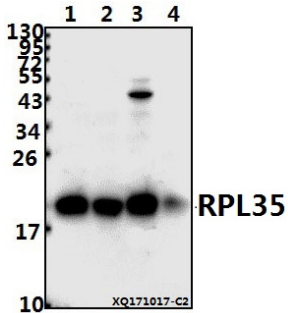
Overview

| | |
|----------------------|--|
| Product Name | Anti-RPL35 (M91) Antibody |
| Reactive Species | Human, Mouse, Rat |
| Description | Boster Bio Anti-RPL35 (M91) Antibody catalog # A10561-1. Tested in WB,IHC,IP applications. This antibody reacts with Human,Mouse,Rat. |
| Application | IP, IHC, WB |
| Clonality | Polyclonal |
| Formulation | Rabbit IgG, 1mg/ml in PBS with 0.02% sodium azide, 50% glycerol, pH7.2 |
| Storage Instructions | Store at -20°C for one year. For short term storage and frequent use, store at 4°C for up to one month. Avoid repeated freeze-thaw cycles. |
| Host | Rabbit |
| Uniprot ID | P42766 |

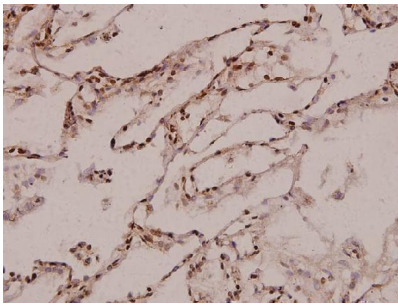
Technical Details

| | |
|---------------------|---|
| Immunogen | Synthetic peptide, corresponding to amino acids 70-120 of Human Ribosomal Protein L35. |
| Isotype | IgG |
| Form | Liquid |
| Concentration | 1 mg/ml |
| Purification | The antibody was affinity-purified from rabbit antiserum by affinity-chromatography using epitope-specific immunogen and the purity is > 95% (by SDS-PAGE). |
| Suggested Dilutions | WB: 1:500-1:1000 IHC: 1:50-1:200 IP: 1:10-1:100 |

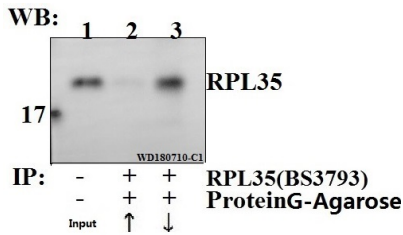
Anti-RPL35 (M91) Antibody (A10561-1) Images



Western blot (WB) analysis of RPL35 (M91) pAb at 1:500 dilution Lane1:HeLa whole cell lysate(20ug) Lane2:HEK293T whole cell lysate(20ug) Lane3:The Ovary tissue lysate of Rat(20ug) Lane4:The Kidney tissue lysate of Mouse(20ug)



Immunohistochemistry (IHC) analyzes of RPL35 (M91) pAb in paraffin-embedded human lung carcinoma tissue at 1:100.



Immunoprecipitation of HEK293T cell lysate using RPL35 (M91) pAb (Sephacose Bead Conjugate) #BD0048(lane 2 and lane 3) .Lane 1 is 30% input. The western blot was probed using RPL35 (M91) #BS3793. "↑" [supernatant]; "↓" (deposition)

Submit a product review to Biocompare.com

Submit a review of this product to Biocompare.com to receive a \$20 Amazon.com giftcard! Your reviews help your fellow scientists make the right decisions. Thank you for your contribution.



Anti-RPL35 (M91) Antibody

For Research Use Only. Not for use in diagnostic procedures.