

## Anti-TUBGCP2 Antibody Picoband®

Catalog Number: A10573-1

### About TUBGCP2

Gamma-tubulin complex component 2 is a protein that in humans is encoded by the TUBGCP2 gene. It is part of the gamma tubulin complex, which required formicrotubule nucleation at the centrosome. Gamma-tubulin complex is necessary for microtubule nucleation at the centrosome. Gamma-tubulin complex is composed of gamma-tubulin, TUBGCP2, TUBGCP3, TUBGCP4, TUBGCP5 and TUBGCP6.

### Overview

Product Name	Anti-TUBGCP2 Antibody Picoband®
Reactive Species	Human
Description	Boster Bio Anti-TUBGCP2 Antibody Picoband® catalog # A10573-1. Tested in ELISA, IF, ICC, WB applications. This antibody reacts with Human. The brand Picoband indicates this is a premium antibody that guarantees superior quality, high affinity, and strong signals with minimal background in Western blot applications. Only our best-performing antibodies are designated as Picoband, ensuring unmatched performance.
Application	ELISA, IF, ICC, WB
Clonality	Polyclonal
Formulation	Each vial contains 4 mg Trehalose, 0.9 mg NaCl, 0.2 mg Na <sub>2</sub> HPO <sub>4</sub> .
Storage Instructions	At -20°C for one year from date of receipt. After reconstitution, at 4°C for one month. It can also be aliquotted and stored frozen at -20°C for six months. Avoid repeated freezing and thawing.
Host	Rabbit
Uniprot ID	Q9BSJ2

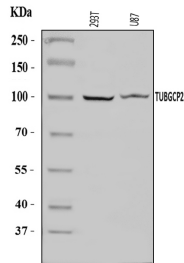
### Technical Details

Immunogen	E.coli-derived human TUBGCP2 recombinant protein (Position: Q213-R888).
Recommended Detection Systems	Boster recommends Enhanced Chemiluminescent Kit with anti-Rabbit IgG (EK1002) for Western blot, and HRP Conjugated anti-Rabbit IgG Super Vision Assay Kit (SV0002-1) for ICC.
Cross Reactivity	No cross-reactivity with other proteins.
Isotype	Rabbit IgG
Form	Lyophilized
Concentration	Adding 0.2 ml of distilled water will yield a concentration of 500 ug/ml.
Purification	Immunogen affinity purified.

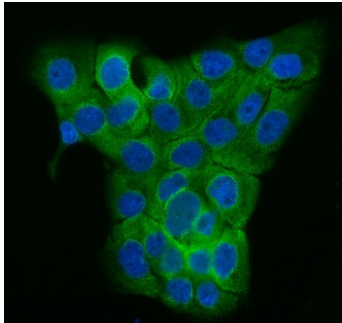
Suggested Dilutions

Western blot, 0.25-0.5 ug/ml, Human  
Immunocytochemistry/Immunofluorescence, 5 ug/ml, Human  
ELISA, 0.1-0.5 ug/ml, -

## Anti-TUBGCP2 Antibody Picoband® (A10573-1) Images



Western blot analysis of TUBGCP2 using anti-TUBGCP2 antibody (A10573-1). Electrophoresis was performed on a 5-20% SDS-PAGE gel at 70V (Stacking gel) / 90V (Resolving gel) for 2-3 hours. The sample well of each lane was loaded with 30 ug of sample under reducing conditions. Lane 1: human 293T whole cell lysates, Lane 2: human U87 whole cell lysates. After electrophoresis, proteins were transferred to a nitrocellulose membrane at 150 mA for 50-90 minutes. Blocked the membrane with 5% non-fat milk/TBS for 1.5 hour at RT. The membrane was incubated with rabbit anti-TUBGCP2 antigen affinity purified polyclonal antibody (Catalog # A10573-1) at 0.5 ug/mL overnight at 4°C, then washed with TBS-0.1%Tween 3 times with 5 minutes each and probed with a goat anti-rabbit IgG-HRP secondary antibody at a dilution of 1:5000 for 1.5 hour at RT. The signal is developed using an Enhanced Chemiluminescent detection (ECL) kit (Catalog # EK1002) with Tanon 5200 system. A specific band was detected for TUBGCP2 at approximately 103 kDa. The expected band size for TUBGCP2 is at 103 kDa.



IF analysis of TUBGCP2 using anti-TUBGCP2 antibody (A10573-1). TUBGCP2 was detected in an immunocytochemical section of A431 cells. Enzyme antigen retrieval was performed using IHC enzyme antigen retrieval reagent (AR0022) for 15 mins. The cells were blocked with 10% goat serum. And then incubated with 5 ug/mL rabbit anti-TUBGCP2 Antibody (A10573-1) overnight at 4°C. DyLight®488 Conjugated Goat Anti-Rabbit IgG (BA1127) was used as secondary antibody at 1:100 dilution and incubated for 30 minutes at 37°C. The section was counterstained with DAPI. Visualize using a fluorescence microscope and filter sets appropriate for the label used.

### Submit a product review to Biocompare.com

Submit a review of this product to Biocompare.com to receive a \$20 Amazon.com giftcard! Your reviews help your fellow scientists make the right decisions. Thank you for your contribution.



### Anti-TUBGCP2 Antibody

For Research Use Only. Not for use in diagnostic procedures.