

## Anti-RNF25 Antibody

Catalog Number: A10595

### About RNF25

This antibody is suitable for Cancer, Immunology and Nuclear Signaling research. RING finger protein 25 (RNF25, also named AO7) contains a RING finger domain and is ubiquitously expressed in various tissues. RNF25 was initially identified in a yeast two-hybrid screen of a murine T-cell library by using UbcH5b, an E2 enzyme, as bait. RNF25 has also been shown to act as a putative E3 ligase, at least in vitro. RNF25 localizes predominantly in the nucleus and supports the transcriptional activity of NF- $\kappa$ B by interacting with p65 in vivo upon stimulation with TNF. Yeast two-hybrid data also suggest that RNF25 interacts with a number of other molecules which may be potential ubiquitin ligase substrates. Among these are molecules that have critical roles in signal transduction and in regulation of translation (personal communication, Allan Weissman, CCR-NCI, Bethesda, MD).

### Overview

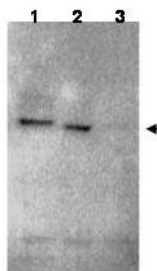
Product Name	Anti-RNF25 Antibody
Reactive Species	Human, Mouse
Description	Boster Bio Anti-RNF25 Antibody (Catalog # A10595). Tested in ELISA, WB applications. This antibody reacts with Human, Mouse.
Application	ELISA, IP, WB
Clonality	Polyclonal
Formulation	0.02 M Potassium Phosphate, 0.15 M Sodium Chloride, pH 7.2, 0.01% (w/v) Sodium Azide
Storage Instructions	Store vial at -20°C prior to opening. Aliquot contents and freeze at -20°C or below for extended storage. Avoid cycles of freezing and thawing. Centrifuge product if not completely clear after standing at room temperature. This product is stable for several weeks at 4°C as an undiluted liquid. Dilute only prior to immediate use. Expiration date is one (1) year from date of opening. (Ship on dry ice.)
Host	Rabbit
Uniprot ID	Q96BH1

### Technical Details

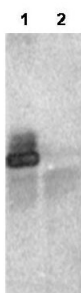
Immunogen	This affinity purified antibody was prepared from whole rabbit serum produced by repeated immunizations with a synthetic peptide corresponding to amino acids near the carboxyl terminus of human RNF25 protein.
Predicted Reactive Species	Canine, Chicken, Chimpanzee
Isotype	IgG
Form	Liquid (sterile filtered)

Concentration	1.1 mg/mL by UV absorbance at 280 nm
Purification	This affinity purified antibody is directed against human RNF25 protein. The product was affinity purified from monospecific antiserum by immunoaffinity chromatography. The antibody also recognizes mouse RNF25 protein. Reactivity against homologues from other sources has not been determined.
Suggested Dilutions	ELISA: 1:10,000 - 1:40,000 IP: 1 mg WB: 1:200 - 1:2,000 This affinity purified antibody has been tested for use in ELISA, western blot and immunoprecipitation. Specific conditions for reactivity should be optimized by the end user. Expect a band approximately 54 kDa in size corresponding to RNF25 protein by western blotting in the appropriate cell lysate or extract.

## Anti-RNF25 Antibody (A10595) Images



Western blot using Boster's affinity purified anti-RNF25 antibody shows detection of RNF25 (arrow head) in HEK293 cells over-expressing human RNF25 (lane 1) or mouse RNF25 (lane 2). Lane 3 is a vector only control. The extracts were loaded onto a gel, followed by electrophoresis and transfer to nitrocellulose. The membrane was probed with the primary antibody diluted to 1:1,000. Personal Communication, Allan Weissman, CCR-NCI, Bethesda, MD.



1  $\mu$ g of Boster's affinity purified anti-RNF25 was used in immunoprecipitation of 20  $\mu$ g HEK293 cell lysate over-expressing HA-tagged human RNF25 (lane 1) or vector only control (lane 2). The precipitated complex was loaded onto a gel, followed by electrophoresis and transfer to nitrocellulose. The membrane was probed with anti-HA tag antibody. Personal Communication, Allan Weissman, CCR-NCI, Bethesda, MD.

## Submit a product review to Biocompare.com

Submit a review of this product to Biocompare.com to receive a \$20 Amazon.com giftcard! Your reviews help your fellow scientists make the right decisions. Thank you for your contribution.



### Anti-RNF25 Antibody

For Research Use Only. Not for use in diagnostic procedures.