

Anti-RBPMS2 Antibody Picoband®

Catalog Number: A10660-1

About RBPMS2

The protein encoded by this gene is a member of the RNA recognition motif (RRM)-containing protein family and is involved in the development and dedifferentiation of digestive smooth muscle cells. The encoded protein functions as a homodimer and indirectly inhibits the bone morphogenetic protein pathway.

Overview

Product Name	Anti-RBPMS2 Antibody Picoband®
Reactive Species	Human
Description	Boster Bio Anti-RBPMS2 Antibody Picoband® catalog # A10660-1. Tested in WB, ELISA applications. This antibody reacts with Human. The brand Picoband indicates this is a premium antibody that guarantees superior quality, high affinity, and strong signals with minimal background in Western blot applications. Only our best-performing antibodies are designated as Picoband, ensuring unmatched performance.
Application	ELISA, WB
Clonality	Polyclonal
Formulation	Each vial contains 4 mg Trehalose, 0.9 mg NaCl, 0.2 mg Na ₂ HPO ₄ .
Storage Instructions	At -20°C for one year from date of receipt. After reconstitution, at 4°C for one month. It can also be aliquotted and stored frozen at -20°C for six months. Avoid repeated freezing and thawing.
Host	Rabbit
Uniprot ID	Q6ZRY4

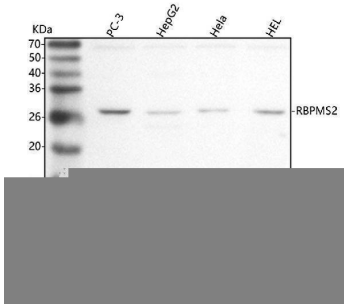
Technical Details

Immunogen	E.coli-derived human RBPMS2 recombinant protein (Position: K116-Q201).
Recommended Detection Systems	Boster recommends Enhanced Chemiluminescent Kit with anti-Rabbit IgG (EK1002) for Western blot.
Cross Reactivity	No cross reactivity with other proteins.
Isotype	IgG
Form	Lyophilized
Concentration	Adding 0.2 ml of distilled water will yield a concentration of 500 µg/ml.
Purification	Immunogen affinity purified.

Suggested Dilutions

Western blot, 0.25-0.5 ug/ml, Human
ELISA, 0.1-0.5 ug/ml, -

Anti-RBPMS2 Antibody Picoband® (A10660-1) Images



Western blot analysis of RBPMS2 using anti-RBPMS2 antibody (A10660-1). Electrophoresis was performed on a 5-20% SDS-PAGE gel at 70V (Stacking gel) / 90V (Resolving gel) for 2-3 hours. The sample well of each lane was loaded with 30 ug of sample under reducing conditions. Lane 1: human PC-3 whole cell lysates, Lane 2: human HepG2 whole cell lysates, Lane 3: human Hela whole cell lysates, Lane 4: human HEL whole cell lysates. After electrophoresis, proteins were transferred to a nitrocellulose membrane at 150 mA for 50-90 minutes. Blocked the membrane with 5% non-fat milk/TBS for 1.5 hour at RT. The membrane was incubated with rabbit anti-RBPMS2 antigen affinity purified polyclonal antibody (Catalog # A10660-1) at 0.5 ug/mL overnight at 4°C, then washed with TBS-0.1%Tween 3 times with 5 minutes each and probed with a goat anti-rabbit IgG-HRP secondary antibody at a dilution of 1:5000 for 1.5 hour at RT. The signal is developed using an Enhanced Chemiluminescent detection (ECL) kit (Catalog # EK1002) with Tanon 5200 system. A specific band was detected for RBPMS2 at approximately 28 kDa. The expected band size for RBPMS2 is at 22 kDa.

Submit a product review to [Biocompare.com](https://www.biocompare.com)

Submit a review of this product to [Biocompare.com](https://www.biocompare.com) to receive a \$20 Amazon.com giftcard! Your reviews help your fellow scientists make the right decisions. Thank you for your contribution.



Anti-RBPMS2 Antibody

For Research Use Only. Not for use in diagnostic procedures.