

## Anti-POU6F2 Antibody (N-term)

Catalog Number: A10673

### About POU6F2

This gene encodes a member of the POU protein family characterized by the presence of a bipartite DNA binding domain, consisting of a POU-specific domain and a homeodomain, separated by a variable polylinker. The DNA binding domain may bind to DNA as monomers or as homo- and/or heterodimers, in a sequence-specific manner. The POU family members are transcriptional regulators, many of which are known to control cell type-specific differentiation pathways. This gene is a tumor suppressor involved in Wilms tumor (WT) predisposition. Alternatively spliced transcript variants encoding distinct isoforms have been found for this gene.

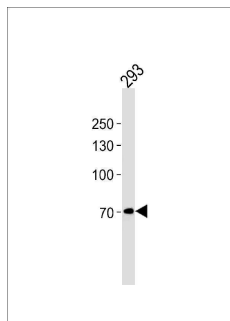
### Overview

Product Name	Anti-POU6F2 Antibody (N-term)
Reactive Species	Human
Description	Boster Bio Anti-POU6F2 Antibody (N-term) (Catalog # A10673). Tested in WB application(s). This antibody reacts with Human.
Application	WB
Clonality	Polyclonal
Formulation	Purified polyclonal antibody supplied in PBS with 0.09% (W/V) sodium azide.
Storage Instructions	Maintain refrigerated at 2-8°C for up to 2 weeks. For long-term storage, store at -20°C in small aliquots to prevent freeze-thaw cycles.
Host	Rabbit
Uniprot ID	P78424

### Technical Details

Immunogen	This POU6F2 antibody is generated from rabbits immunized with a KLH conjugated synthetic peptide between 34-61 amino acids from the N-terminal region of human POU6F2.
Predicted Reactive Species	Bovine, Rat, Zebrafish
Isotype	Rabbit IgG
Purification	This antibody is purified through a protein A column, followed by peptide affinity purification.
Suggested Dilutions	WB: 1:1000

## Anti-POU6F2 Antibody (N-term) (A10673) Images



POU6F2 Antibody (N-term) western blot analysis in 293 cell line lysates (35ug/lane). This demonstrates the POU6F2 antibody detected the POU6F2 protein (arrow).

### Submit a product review to Biocompare.com

Submit a review of this product to Biocompare.com to receive a \$20 Amazon.com giftcard! Your reviews help your fellow scientists make the right decisions. Thank you for your contribution.



Anti-POU6F2 Antibody (N-term)

For Research Use Only. Not for use in diagnostic procedures.