

## Anti-GLP2R Antibody Picoband®

Catalog Number: A10692-1

### About GLP2R

This gene encodes a G protein-coupled receptor closely related to the glucagon receptor that binds glucagon-like peptide 2 (GLP-2). Activation of this gene stimulates intestinal growth by increasing villus height, enhancing crypt cell proliferation, and reducing enterocyte apoptosis, thereby promoting nutrient absorption and maintaining gut barrier integrity. Glucagon like protein 2 receptor signaling also regulates intestinal blood flow, supports mucosal healing after injury, and modulates gut hormone secretion. In addition, it has been implicated in metabolic homeostasis and may influence energy balance and glucose metabolism. Dysregulation of this receptor or its signaling pathways is associated with intestinal disorders, including short bowel syndrome and inflammatory bowel disease. This receptor is a potential therapeutic target for enhancing intestinal regeneration and treating gastrointestinal diseases.

### Overview

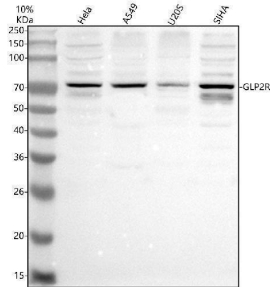
Product Name	Anti-GLP2R Antibody Picoband®
Reactive Species	Human
Description	Boster Bio Anti-GLP2R Antibody Picoband® catalog # A10692-1. Tested in WB, ICC/IF, ELISA applications. This antibody reacts with Human. The brand Picoband indicates this is a premium antibody that guarantees superior quality, high affinity, and strong signals with minimal background in Western blot applications. Only our best-performing antibodies are designated as Picoband, ensuring unmatched performance.
Application	ELISA, IF, ICC, WB
Clonality	Polyclonal
Formulation	Each vial contains 4 mg Trehalose, 0.9 mg NaCl, 0.2 mg Na <sub>2</sub> HPO <sub>4</sub> .
Storage Instructions	At -20°C for one year from date of receipt. After reconstitution, at 4°C for one month. It can also be aliquotted and stored frozen at -20°C for six months. Avoid repeated freezing and thawing.
Host	Rabbit
Uniprot ID	O95838

### Technical Details

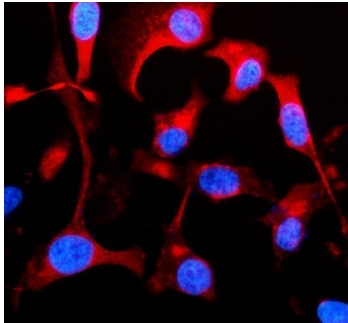
Immunogen	E.coli-derived human GLP2R recombinant protein (Position: R132-I553).
Form	Lyophilized
Concentration	Adding 0.2 ml of distilled water will yield a concentration of 500 ug/ml.
Purification	Immunogen affinity purified.
Suggested Dilutions	Western blot, 0.25-0.5 ug/ml, Human

	Immunocytochemistry/Immunofluorescence, 5 ug/ml, Human ELISA, 0.1-0.5 ug/ml
--	--

## Anti-GLP2R Antibody Picoband® (A10692-1) Images



Western blot analysis of GLP2R using anti-GLP2R antibody (A10692-1). Electrophoresis was performed on a 10% SDS-PAGE gel at 80V (Stacking gel) / 120V (Resolving gel) for 2 hours. The sample well of each lane was loaded with 30 ug of sample under reducing conditions. Lane 1: human HeLa whole cell lysates, Lane 2: human A549 whole cell lysates, Lane 3: human U2OS whole cell lysates, Lane 4: human SIHA whole cell lysates. After electrophoresis, proteins were transferred to a nitrocellulose membrane at 150 mA for 50-90 minutes. Blocked the membrane with 5% non-fat milk/TBS for 1.5 hour at RT. The membrane was incubated with rabbit anti-GLP2R antigen affinity purified polyclonal antibody (A10692-1) at 0.5 ug/mL overnight at 4°C, then washed with TBS-0.1% Tween 3 times with 5 minutes each and probed with a goat anti-rabbit IgG-HRP secondary antibody at a dilution of 1:5000 for 1.5 hour at RT. The signal is developed using an ECL Plus Western Blotting Substrate (Catalog # AR1196-200) with Tanon 5200 system. A specific band was detected for GLP2R at approximately 72 kDa. The expected band size for GLP2R is at 63 kDa.



IF analysis of GLP2R using anti-GLP2R antibody (A10692-1). GLP2R was detected in an immunocytochemical section of HeLa cells. Enzyme antigen retrieval was performed using IHC enzyme antigen retrieval reagent (AR0022) for 15 mins. The cells were blocked with 10% goat serum. And then incubated with 5 ug/mL rabbit anti-GLP2R Antibody (A10692-1) overnight at 4°C. Cy3 Conjugated Goat Anti-Rabbit IgG (BA1032) was used as secondary antibody at 1:500 dilution and incubated for 30 minutes at 37°C. The section was counterstained with DAPI. Visualize using a fluorescence microscope and filter sets appropriate for the label used.

### Submit a product review to Biocompare.com

Submit a review of this product to Biocompare.com to receive a \$20 Amazon.com giftcard! Your reviews help your fellow scientists make the right decisions. Thank you for your contribution.



### Anti-GLP2R Antibody

For Research Use Only. Not for use in diagnostic procedures.