

Anti-SESTD1 Antibody

Catalog Number: A10698

About SESTD1

SESTD1 was initially identified in mutant zebrafish with defects in the spontaneous contraction and touch response as a novel gene, solo, encoding a protein containing SEC14 and spectrin repeat domains. Other experiments indicated that SESTD1 interacts with the TRPC4 and TRPC5, members of the transient receptor potential channel family, via the TRPC calmodulin- and inositol 1, 4, 5-triphosphate receptor-binding domain and is essential for efficient receptor-mediated activation of TRPC5, suggesting that SESTD1 is a novel regulator of these TRPC proteins.

Overview

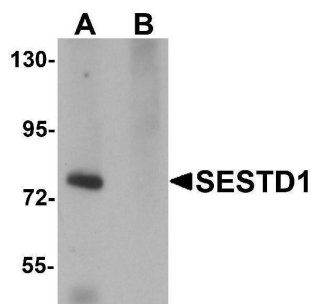
Product Name	Anti-SESTD1 Antibody
Reactive Species	Human, Mouse, Rat
Description	Boster Bio Anti-SESTD1 Antibody (Catalog # A10698). Tested in ELISA, WB, IHC-P, IF applications. This antibody reacts with Human, Mouse, Rat.
Application	ELISA, IF, IHC-P, WB
Clonality	Polyclonal
Formulation	SESTD1 Antibody is supplied in PBS containing 0.02% sodium azide.
Storage Instructions	SESTD1 antibody can be stored at 4°C for three months and -20°C, stable for up to one year. Avoid repeated freeze-thaw cycles. Antibodies should not be exposed to prolonged high temperatures.
Host	Rabbit
Uniprot ID	Q86VW0

Technical Details

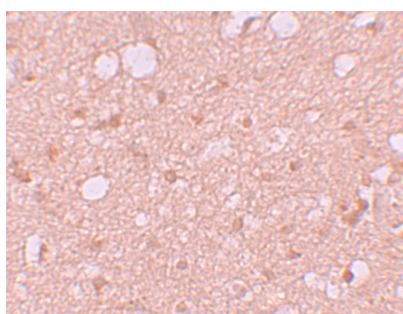
Immunogen	SESTD1 antibody was raised against a 15 amino acid synthetic peptide near the carboxy terminus of human SESTD1. The immunogen is located within the last 50 amino acids of SESTD1.
Predicted Reactive Species	Mouse, Rat
Isotype	IgG
Form	Liquid
Concentration	1 mg/mL
Purification	SESTD1 Antibody is affinity chromatography purified via peptide column.
Suggested Dilutions	SESTD1 antibody can be used for detection of SESTD1 by Western blot at 1 ug/mL. Antibody can also be used for immunohistochemistry starting at 5 ug/mL. For immunofluorescence start at 20 ug/mL.

Antibody validated: Western Blot in rat samples; Immunohistochemistry in human samples and Immunofluorescence in human samples. All other applications and species not yet tested. Optimal dilutions for each application should be determined by the researcher.

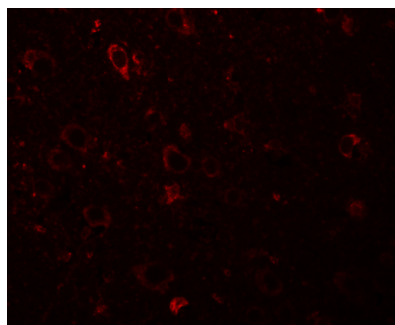
Anti-SESTD1 Antibody (A10698) Images



Western blot analysis of SESTD1 in rat brain tissue lysate with SESTD1 antibody at 1 ug/mL in (A) the absence and (B) the presence of blocking peptide.



Immunohistochemistry of SESTD1 in human brain tissue with SESTD1 antibody at 5 ug/mL.



Immunofluorescence of SESTD1 in Human Brain cells with SESTD1 antibody at 20 ug/mL.

Submit a product review to [Biocompare.com](https://www.biocompare.com)

Submit a review of this product to [Biocompare.com](https://www.biocompare.com) to receive a \$20 Amazon.com giftcard! Your reviews help your fellow scientists make the right decisions. Thank you for your contribution.



Anti-SESTD1 Antibody

For Research Use Only. Not for use in diagnostic procedures.