

## Anti-SLC25A37 Antibody (C-term)

Catalog Number: A10701

### About SLC25A37

SLC25A37 belongs to the SLC25 family of mitochondrial carrier proteins (Haitina et al., 2006 [PubMed 16949250]).[supplied by OMIM].

### Overview

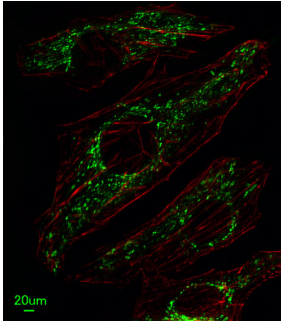
Product Name	Anti-SLC25A37 Antibody (C-term)
Reactive Species	Human, Rat
Description	Boster Bio Anti-SLC25A37 Antibody (C-term) (Catalog # A10701). Tested in IF, WB, Flow Cytometry, IHC-P application(s). This antibody reacts with Human, Rat.
Application	Flow Cytometry, IF, IHC-P, WB
Clonality	Polyclonal
Formulation	Purified polyclonal antibody supplied in PBS with 0.09% (W/V) sodium azide.
Storage Instructions	Maintain refrigerated at 2-8°C for up to 2 weeks. For long-term storage, store at -20°C in small aliquots to prevent freeze-thaw cycles.
Host	Rabbit
Uniprot ID	Q9NYZ2

### Technical Details

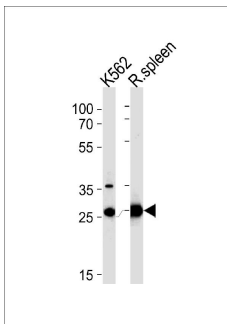
Immunogen	This SLC25A37 antibody is generated from rabbits immunized with a KLH conjugated synthetic peptide between 309-338 amino acids from the C-terminal region of human SLC25A37.
Predicted Reactive Species	Bovine, Rat, Zebrafish
Isotype	Rabbit IgG
Purification	This antibody is purified through a protein A column, followed by peptide affinity purification.
Suggested Dilutions	<p>Dilute the sample so that the expected range of concentrations fall within the detection range of this kit.</p> <p>If the expected range of concentration is unknown, a pilot test should be conducted to decide the optimal dilution ratio for your samples.</p> <p>Some PubMed article(s) citing the expression level of this target are as follows:</p> <p>Boster Bio's internal QC testing used:</p> <p>IF: 1:25 WB: 1:1000 IHC-P: 1:10-1:50 FC: 1:10-1:50</p>



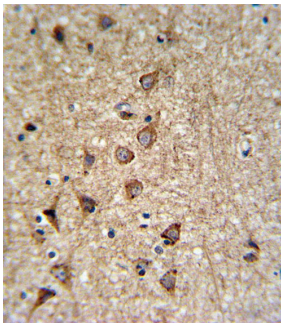
## Anti-SLC25A37 Antibody (C-term) (A10701) Images



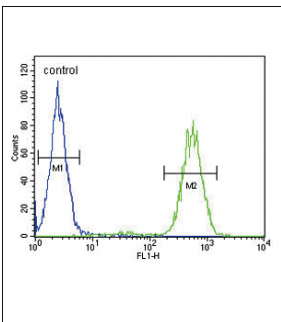
Immunofluorescent analysis of HeLa cells, using SLC25A37 Antibody (C-term) . A10701 was diluted at 1:25 dilution. Alexa Fluor 488-conjugated goat anti-rabbit IgG at 1:400 dilution was used as the secondary antibody (green). Cytoplasmic actin was counterstained with Dylight Fluor® 554 (red) conjugated Phalloidin (red).



SLC25A37 Antibody (C-term) (Cat. #A10701) western blot analysis in K562 cell line and rat spleen tissue lysates (35ug/lane). This demonstrates the SLC25A37 antibody detected the SLC25A37 protein (arrow).



SLC25A37 Antibody (C-term) (Cat. #A10701) IHC analysis in formalin fixed and paraffin embedded brain tissue followed by peroxidase conjugation of the secondary antibody and DAB staining. This data demonstrates the use of the SLC25A37 Antibody (C-term) for immunohistochemistry. Clinical relevance has not been evaluated.



SLC25A37 Antibody (C-term) (Cat. #A10701) flow cytometric analysis of MDA-MB231 cells (right histogram) compared to a negative control cell (left histogram). FITC-conjugated goat-anti-rabbit secondary antibodies were used for the analysis.

**Submit a product review to Biocompare.com**

Submit a review of this product to Biocompare.com to receive a \$20 Amazon.com giftcard! Your reviews help your fellow scientists make the right decisions. Thank you for your contribution.



## Anti-SLC25A37 Antibody (C-term)