

Anti-PRIC285 HELZ2 Antibody

Catalog Number: A10707

About HELZ2

Helicase that acts as a transcriptional coactivator for a number of nuclear receptors including PPARA, PPARG, THRA, THRB and RXRA.

Surapureddi S., Proc. Natl. Acad. Sci. U.S.A. 99:11836-11841(2002).

Tomaru T., Endocrinology 147:377-388(2006).

Overview

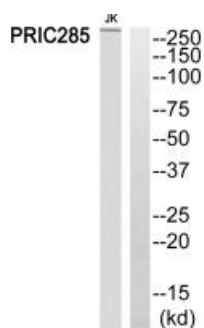
Product Name	Anti-PRIC285 HELZ2 Antibody
Reactive Species	Human
Description	Boster Bio Anti-PRIC285 HELZ2 Antibody (Catalog # A10707). Tested in WB applications. This antibody reacts with Human.
Application	WB
Clonality	Polyclonal
Formulation	Rabbit IgG in phosphate buffered saline (without Mg ²⁺ and Ca ²⁺), pH 7.4, 150mM NaCl, 0.02% sodium azide and 50% glycerol.
Storage Instructions	Store at -20°C for one year. For short term storage and frequent use, store at 4°C for up to one month. Avoid repeated freeze-thaw cycles.
Host	Rabbit
Uniprot ID	Q9BYK8

Technical Details

Immunogen	Synthesized peptide derived from internal of human PRIC285.
Predicted Reactive Species	Chimpanzee, Drosophila, Macaque
Isotype	IgG
Form	Liquid
Concentration	1 mg/ml
Purification	The antibody was affinity-purified from rabbit antiserum by affinity-chromatography using epitope-specific immunogen.
Suggested Dilutions	Dilute the sample so that the expected range of concentrations fall within the detection range of this kit.

If the expected range of concentration is unknown, a pilot test should be conducted to decide the optimal dilution ratio for your samples.
Some PubMed article(s) citing the expression level of this target are as follows:
Boster Bio's internal QC testing used:
Western blotting: 1:500~1:3000

Anti-PRIC285 HELZ2 Antibody (A10707) Images



Western blot analysis of extracts from Jurkat cells, using PRIC285 antibody A10707.

Submit a product review to Biocompare.com

Submit a review of this product to Biocompare.com to receive a \$20 Amazon.com giftcard! Your reviews help your fellow scientists make the right decisions. Thank you for your contribution.



Anti-PRIC285 HELZ2 Antibody