

Anti-B9 domain-containing protein 1 B9D1 Antibody

Catalog Number: A10722

About B9D1

Meckel syndrome (MKS) is an embryonic lethal, autosomal recessive disorder characterized by polycystic kidney disease, central nervous system defects, polydactyly and liver fibrosis. B9D1 is a B9 domain-containing protein, one of several that are involved in ciliogenesis. Alterations in expression of this gene have been found in a family with Meckel syndrome. B9D1, and its related protein B9D2, form a complex with MKS1, disruption of which causes MKS. B9D1 is thought to be required for normal hedgehog signaling, ciliogenesis, and ciliary protein localization.

Overview

Product Name	Anti-B9 domain-containing protein 1 B9D1 Antibody
Reactive Species	Human
Description	Boster Bio Anti-B9 domain-containing protein 1 B9D1 Antibody (Catalog # A10722). Tested in ELISA, WB, ICC, IF applications. This antibody reacts with Human.
Application	ELISA, IF, ICC, WB
Clonality	Polyclonal
Formulation	B9D1 Antibody is supplied in PBS containing 0.02% sodium azide.
Storage Instructions	B9D1 antibody can be stored at 4°C for three months and -20°C, stable for up to one year. Avoid repeated freeze-thaw cycles. Antibodies should not be exposed to prolonged high temperatures.
Host	Rabbit
Uniprot ID	Q9UPM9

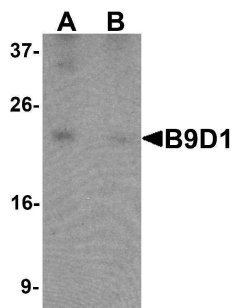
Technical Details

Immunogen	B9D1 antibody was raised against an 18 amino acid synthetic peptide near the carboxy terminus of human B9D1. The immunogen is located within amino acids 130 - 180 of B9D1.
Predicted Reactive Species	Mouse, Rat
Cross Reactivity	At least two isoforms of B9D1 are known to exist; this antibody will only recognize the longest isoform. B9D1 antibody is predicted to not cross-react with other DNAJC family members.
Isotype	IgG
Form	Liquid
Concentration	1 mg/mL
Purification	B9D1 Antibody is affinity chromatography purified via peptide column.

Suggested Dilutions

B9D1 antibody can be used for detection of B9D1 by Western blot at 1 ug/mL. Antibody can also be used for immunocytochemistry starting at 5 ug/mL. For immunofluorescence start at 20 ug/mL. Antibody validated: Western Blot in human samples; Immunocytochemistry in human samples and Immunofluorescence in human samples. All other applications and species not yet tested. Optimal dilutions for each application should be determined by the researcher.

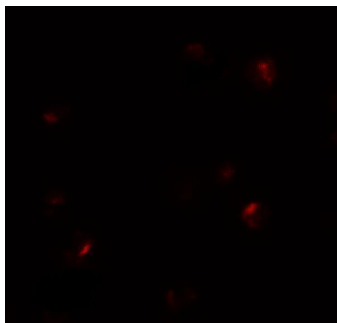
Anti-B9 domain-containing protein 1 B9D1 Antibody (A10722) Images



Western blot analysis of B9D1 in 293 cell lysate with B9D1 antibody at 1 ug/mL in (A) the absence and (B) the presence of blocking peptide.



Immunocytochemistry of B9D1 in 293 cells with B9D1 antibody at 5 ug/mL.



Immunofluorescence of B9D1 in 293 cells with B9D1 antibody at 20 ug/mL.

Submit a product review to [Biocompare.com](https://www.biocompare.com)

Submit a review of this product to [Biocompare.com](https://www.biocompare.com) to receive a \$20 Amazon.com giftcard! Your reviews help your fellow scientists make the right decisions. Thank you for your contribution.



Anti-B9 domain-containing protein 1 B9D1 Antibody

For Research Use Only. Not for use in diagnostic procedures.