

## Anti-CEPT1 Antibody (N-term)

Catalog Number: A10734

### About CEPT1

Cholinephosphotransferase catalyses the final step in the synthesis of phosphatidylcholine by the transfer of phosphocholine from CDP-choline to diacylglycerol. The synthesis of phosphatidylethanolamine by ethanolaminephosphotransferase occurs using an analogous reaction. This gene codes for a choline/ethanolaminephosphotransferase. The protein can synthesize either choline- or ethanolamine- containing phospholipids. Two alternatively spliced transcripts encoding the same isoform have been identified.

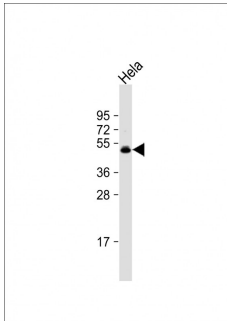
### Overview

Product Name	Anti-CEPT1 Antibody (N-term)
Reactive Species	Human, Mouse
Description	Boster Bio Anti-CEPT1 Antibody (N-term) (Catalog # A10734). Tested in IHC-P-Leica, WB application(s). This antibody reacts with Human, Mouse.
Application	WB, IHC-P-Leica
Clonality	Polyclonal
Formulation	Purified polyclonal antibody supplied in PBS with 0.09% (W/V) sodium azide.
Storage Instructions	Maintain refrigerated at 2-8°C for up to 2 weeks. For long-term storage, store at -20°C in small aliquots to prevent freeze-thaw cycles.
Host	Rabbit
Uniprot ID	Q9Y6K0

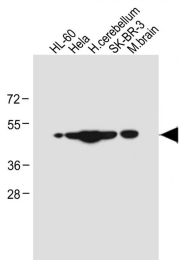
### Technical Details

Immunogen	This CEPT1 antibody is generated from rabbits immunized with a KLH conjugated synthetic peptide between 29-57 amino acids from the N-terminal region of human CEPT1.
Predicted Reactive Species	Rat, Xenopus
Isotype	Rabbit IgG
Purification	This antibody is purified through a protein A column, followed by peptide affinity purification.
Suggested Dilutions	WB: 1:2000 IHC-P-Leica: 1:500

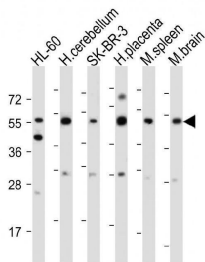
## Anti-CEPT1 Antibody (N-term) (A10734) Images



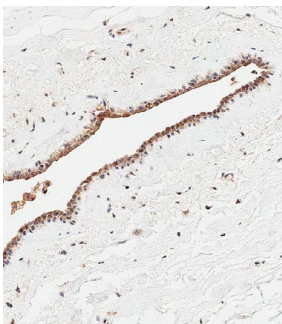
Anti-CEPT1 Antibody (N-term) at 1:1000 dilution + HeLa whole cell lysate Lysates/proteins at 20 µg per lane. Secondary Goat Anti-Rabbit IgG, (H+L), Peroxidase conjugated at 1/10000 dilution. Predicted band size : 47 kDa Blocking/Dilution buffer: 5% NFDm/TBST.



All lanes : Anti-CEPT1 Antibody (N-term) at 1:4000 dilution Lane 1: HL-60 whole cell lysate Lane 2: HeLa whole cell lysate Lane 3: Human cerebellum tissue lysate Lane 4: SK-BR-3 whole cell lysate Lane 5: Mouse brain tissue lysate Lysates/proteins at 20 µg per lane. Secondary Goat Anti-Rabbit IgG, (H+L), Peroxidase conjugated at 1/10000 dilution. Predicted band size : 47 kDa Blocking/Dilution buffer: 5% NFDm/TBST.

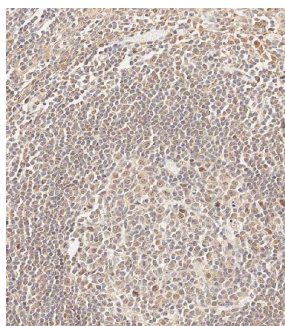


All lanes : Anti-CEPT1 Antibody (N-term) at 1:2000 dilution Lane 1: HL-60 whole cell lysate Lane 2: Human cerebellum tissue lysate Lane 3: SK-BR-3 whole cell lysate Lane 4: Human placenta tissue lysate Lane 5: Mouse spleen tissue lysate Lane 6: Mouse brain tissue lysate Lysates/proteins at 20 µg per lane. Secondary Goat Anti-Rabbit IgG, (H+L), Peroxidase conjugated at 1/10000 dilution. Predicted band size : 47 kDa Blocking/Dilution buffer: 5% NFDm/TBST.



Immunohistochemical analysis of paraffin-embedded Human breast tissue using A10734 performed on the Leica® BOND RXm. Tissue was fixed with formaldehyde at room temperature, antigen retrieval was by heat mediation with a EDTA buffer (pH9. 0). Samples were incubated with primary antibody(1:500) for 1 hours at room temperature. A undiluted biotinylated CRF Anti-Polyvalent HRP Polymer antibody was used as the secondary antibody.

Immunohistochemical analysis of paraffin-embedded Human tonsil tissue using A10734 performed on the Leica® BOND RXm. Tissue was fixed with formaldehyde at room temperature, antigen retrieval was by heat mediation with a EDTA buffer (pH9. 0). Samples were incubated with primary antibody(1:500) for 1 hours at room temperature. A undiluted biotinylated CRF Anti-Polyvalent HRP Polymer



antibody was used as the secondary antibody.

## Submit a product review to [Biocompare.com](https://www.biocompare.com)

Submit a review of this product to [Biocompare.com](https://www.biocompare.com) to receive a \$20 Amazon.com giftcard! Your reviews help your fellow scientists make the right decisions. Thank you for your contribution.



Anti-CEPT1 Antibody (N-term)

For Research Use Only. Not for use in diagnostic procedures.