

Anti-DDA DDA1 Antibody

Catalog Number: A10757

About DDA1

DDA1 (DET1 and DDB1 associated 1), along with DET1 and DDB1 and a member of the UBE2E group of canonical ubiquitin-conjugating enzymes, comprise DDD-E2 complexes, which interact with multiple ubiquitin E3 ligases. One of these E3 ligases is Cul4-containing E3 ligase complex CRL4. Cells depleted of DDA1 spontaneously accumulate double-stranded DNA breaks in a similar fashion as Cul4A-, Cul4B-, or WDR23-depleted cells, suggesting that DDA1 interacts with the CRL4 complex and may be involved in the ubiquitination and subsequent proteasomal degradation of target proteins.

Overview

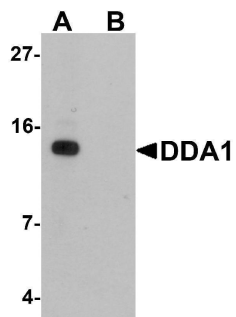
Product Name	Anti-DDA DDA1 Antibody
Reactive Species	Human, Mouse, Rat
Description	Boster Bio Anti-DDA DDA1 Antibody (Catalog # A10757). Tested in ELISA, WB, IHC-P, IF applications. This antibody reacts with Human, Mouse, Rat.
Application	ELISA, IF, IHC-P, WB
Clonality	Polyclonal
Formulation	DDA Antibody is supplied in PBS containing 0.02% sodium azide.
Storage Instructions	DDA antibody can be stored at 4°C for three months and -20°C, stable for up to one year. Avoid repeated freeze-thaw cycles. Antibodies should not be exposed to prolonged high temperatures.
Host	Rabbit
Uniprot ID	Q9BW61

Technical Details

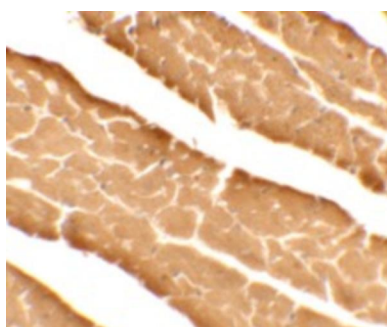
Immunogen	DDA1 antibody was raised against an 18 amino acid synthetic peptide near the carboxy terminus of human DDA1. The immunogen is located within the last 50 amino acids of DDA.
Predicted Reactive Species	Bovine, Chicken
Isotype	IgG
Form	Liquid
Concentration	1 mg/mL
Purification	DDA Antibody is affinity chromatography purified via peptide column.
Suggested Dilutions	DDA1 antibody can be used for detection of DDA1 by Western blot at 1 ug/mL. Antibody can also be used for immunohistochemistry starting at 5 ug/mL. For immunofluorescence start at 20 ug/mL.

Antibody validated: Western Blot in mouse samples; Immunohistochemistry in mouse samples and Immunofluorescence in mouse samples. All other applications and species not yet tested. Optimal dilutions for each application should be determined by the researcher.

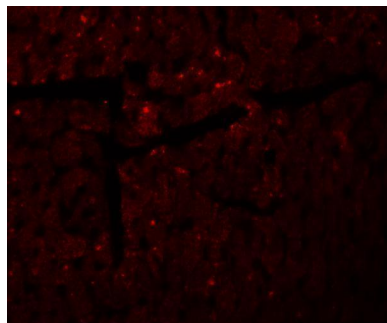
Anti-DDA DDA1 Antibody (A10757) Images



Western blot analysis of DDA1 in mouse heart tissue lysate with DDA1 antibody at 1 ug/mL in (A) the absence and (B) the presence of blocking peptide



Immunohistochemistry of DDA1 in mouse heart tissue with DDA1 antibody at 5 ug/mL.



Immunofluorescence of DDA1 in mouse heart tissue with DDA1 antibody at 20 ug/mL.

Submit a product review to [Biocompare.com](https://www.biocompare.com)

Submit a review of this product to [Biocompare.com](https://www.biocompare.com) to receive a \$20 Amazon.com giftcard! Your reviews help your fellow scientists make the right decisions. Thank you for your contribution.



Anti-DDA DDA1 Antibody

For Research Use Only. Not for use in diagnostic procedures.