

Anti-Kremen protein 1 KREMEN1 Antibody

Catalog Number: A10759

About KREMEN1

Kremen (Kringles containing protein marking the eye and the nose) proteins are type I transmembrane proteins that contain extracellular kringles, WSC and CUB domains and an intracellular region without any conserved motifs. Kremens bind a subset of the secreted Dickkopf proteins (Dkk 1, 2, and 4) with high affinity to modulate the canonical Wnt signaling pathway that is transduced by the ternary receptor complex composed of Wnt, Frizzled, and the LDL receptor related protein 5/6 (LRP5/6) coreceptor. KREMEN1 is a receptor for the Dickkopf protein which blocks Wnt/beta catenin signaling. It is necessary to ensure normal spatial and temporal patterns of Wnt activity during developmental processes.

Overview

Product Name	Anti-Kremen protein 1 KREMEN1 Antibody
Reactive Species	Human, Mouse, Rat
Description	Boster Bio Anti-Kremen protein 1 KREMEN1 Antibody (Catalog # A10759). Tested in ELISA, WB, IHC-P, IF applications. This antibody reacts with Human, Mouse, Rat.
Application	ELISA, IF, IHC-P, WB
Clonality	Polyclonal
Formulation	KREMEN1 Antibody is supplied in PBS containing 0.02% sodium azide.
Storage Instructions	KREMEN1 antibody can be stored at 4°C for three months and -20°C, stable for up to one year.
Host	Rabbit
Uniprot ID	Q96MU8

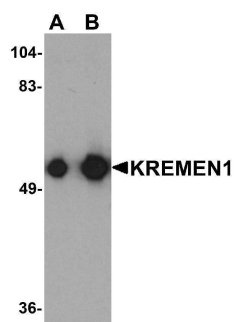
Technical Details

Immunogen	Rabbit polyclonal KREMEN1 antibody was raised against an 18 amino acid peptide near the carboxy terminus of human KREMEN1. The immunogen is located within the last 50 amino acids of KREMEN1.
Predicted Reactive Species	Bovine, Chicken
Cross Reactivity	Three isoforms of KREMEN1 exists as a result of alternative splicing event.
Isotype	IgG
Form	Liquid
Concentration	1 mg/mL
Purification	KREMEN1 Antibody is affinity chromatography purified via peptide column.

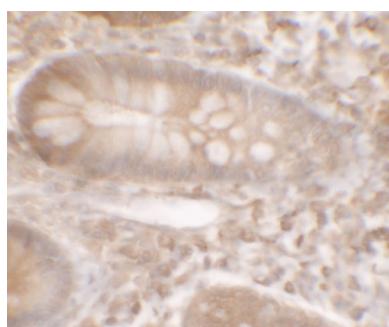
Suggested Dilutions

KREMEN1 antibody can be used for detection of KREMEN1 by Western blot at 0.125 - 0.25 $\mu\text{g}/\text{mL}$. Antibody validated: Western Blot in rat samples; Immunohistochemistry in human samples and Immunofluorescence in human samples. All other applications and species not yet tested. Optimal dilutions for each application should be determined by the researcher.

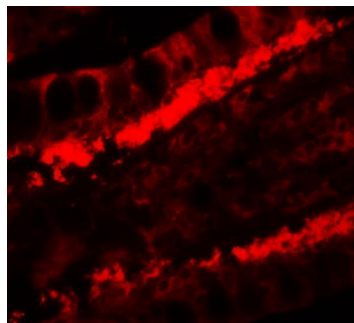
Anti-Kremen protein 1 KREMEN1 Antibody (A10759) Images



Western blot analysis of KREMEN1 in rat small intestine tissue lysate with KREMEN1 antibody at (A) 0.125 and (B) 0.25 ug/mL



Immunohistochemistry of KREMEN1 in human small intestine tissue with KREMEN1 antibody at 5 ug/ml.



Immunofluorescence of KREMEN1 in human small intestine tissue with KREMEN1 antibody at 20 ug/ml.

Submit a product review to [Biocompare.com](https://www.biocompare.com)

Submit a review of this product to [Biocompare.com](https://www.biocompare.com) to receive a \$20 Amazon.com giftcard! Your reviews help your fellow scientists make the right decisions. Thank you for your contribution.



Anti-Kremen protein 1 KREMEN1 Antibody

For Research Use Only. Not for use in diagnostic procedures.