

Anti-Plasmolipin/PLLP Antibody Picoband®

Catalog Number: A10793

About PLLP

PLLP (Plasmolipin, also known as PMLP; TM4SF11), located on 16q13, is a Protein Coding gene. The gene produces a 19987 Da protein composed of 182 amino acids. Plasmolipin (PLLP) is a novel protein identified in human corneal epithelium and has been demonstrated to have a key role in epithelial cell differentiation in other tissues. Plasmolipin is a hydrophobic plasma membrane proteolipid present in both the kidney and brain. The mouse plasmolipin gene has the common organization of the 4-transmembrane (4TM) gene group, with 4 exons and a large first intron.

Overview

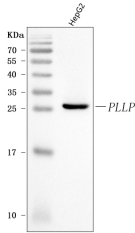
Product Name	Anti-Plasmolipin/PLLP Antibody Picoband®
Reactive Species	Human
Description	Boster Bio Anti-Plasmolipin/PLLP Antibody Picoband® catalog # A10793. Tested in ELISA, Flow Cytometry, WB applications. This antibody reacts with Human. The brand Picoband indicates this is a premium antibody that guarantees superior quality, high affinity, and strong signals with minimal background in Western blot applications. Only our best-performing antibodies are designated as Picoband, ensuring unmatched performance.
Application	ELISA, Flow Cytometry, WB
Clonality	Polyclonal
Formulation	Each vial contains 4 mg Trehalose, 0.9 mg NaCl, 0.2 mg Na ₂ HPO ₄ .
Storage Instructions	At -20°C for one year from date of receipt. After reconstitution, at 4°C for one month. It can also be aliquotted and stored frozen at -20°C for six months. Avoid repeated freezing and thawing.
Host	Rabbit
Uniprot ID	Q9Y342

Technical Details

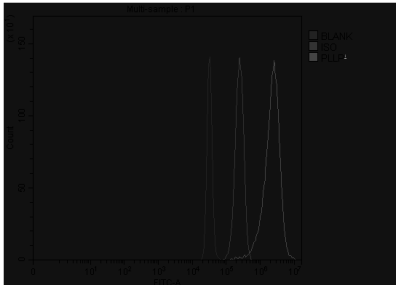
Immunogen	E.coli-derived human Plasmolipin/PLLP recombinant protein (Position: M1-A142).
Recommended Detection Systems	Boster recommends Enhanced Chemiluminescent Kit with anti-Rabbit IgG (EK1002) for Western blot.
Cross Reactivity	No cross-reactivity with other proteins.
Isotype	Rabbit IgG
Form	Lyophilized
Concentration	Adding 0.2 ml of distilled water will yield a concentration of 500 µg/ml.

Purification	Immunogen affinity purified.
Suggested Dilutions	Western blot, 0.25-0.5 ug/ml, Human Flow Cytometry (Fixed), 1-3 ug/1x1x10 ⁶ cells, Human ELISA, 0.1-0.5 ug/ml, -

Anti-Plasmolipin/PLLP Antibody Picoband® (A10793) Images



Western blot analysis of Plasmolipin/PLLP using anti-Plasmolipin/PLLP antibody (A10793). Electrophoresis was performed on a 5-20% SDS-PAGE gel at 70V (Stacking gel) / 90V (Resolving gel) for 2-3 hours. The sample well of each lane was loaded with 30 ug of sample under reducing conditions. Lane 1: human HepG2 whole cell lysates. After electrophoresis, proteins were transferred to a nitrocellulose membrane at 150 mA for 50-90 minutes. Blocked the membrane with 5% non-fat milk/TBS for 1.5 hour at RT. The membrane was incubated with rabbit anti-Plasmolipin/PLLP antigen affinity purified polyclonal antibody (Catalog # A10793) at 0.5 ug/mL overnight at 4°C, then washed with TBS-0.1%Tween 3 times with 5 minutes each and probed with a goat anti-rabbit IgG-HRP secondary antibody at a dilution of 1:5000 for 1.5 hour at RT. The signal is developed using an Enhanced Chemiluminescent detection (ECL) kit (Catalog # EK1002) with Tanon 5200 system. A specific band was detected for Plasmolipin/PLLP at approximately 26 kDa. The expected band size for Plasmolipin/PLLP is at 18,20 kDa.



Flow Cytometry analysis of HepG2 cells using anti-Plasmolipin/PLLP antibody (A10793). Overlay histogram showing HepG2 cells stained with A10793 (Blue line). The cells were fixed with 4% paraformaldehyde and blocked with 10% normal goat serum. And then incubated with rabbit anti-Plasmolipin/PLLP Antibody (A10793, 1 ug/1x10⁶ cells) for 30 min at 20°C. DyLight®488 conjugated goat anti-rabbit IgG (BA1127, 5-10 ug/1x10⁶ cells) was used as secondary antibody for 30 minutes at 20°C. Isotype control antibody (Green line) was rabbit IgG (1 ug/1x10⁶) used under the same conditions. Unlabelled sample (Red line) was also used as a control.

Submit a product review to [Biocompare.com](https://www.biocompare.com)

Submit a review of this product to [Biocompare.com](https://www.biocompare.com) to receive a \$20 Amazon.com giftcard! Your reviews help your fellow scientists make the right decisions. Thank you for your contribution.



Anti-Plasmolipin/PLLP Antibody

For Research Use Only. Not for use in diagnostic procedures.