

Anti-TUBGCP3 Antibody Picoband®

Catalog Number: A10799-2

About TUBGCP3

Gamma-tubulin complex component 3 is a protein that in humans is encoded by the TUBGCP3 gene. TUBGCP3, also named as gamma-tubulin complex protein 3, localized to the centrosome, is a member of gamma-tubulin complex proteins which play key roles in microtubule nucleation and organization. It has been reported that TUBGCP3 rotation can bring gamma-tubulin molecules into proximity. 15719-1-AP antibody detects the isoform proteins around 95-101 kDa and 50 kDa in SDS-PAGE.

Overview

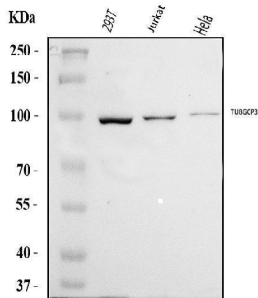
Product Name	Anti-TUBGCP3 Antibody Picoband®
Reactive Species	Human
Description	Boster Bio Anti-TUBGCP3 Antibody Picoband® catalog # A10799-2. Tested in ELISA, WB applications. This antibody reacts with Human. The brand Picoband indicates this is a premium antibody that guarantees superior quality, high affinity, and strong signals with minimal background in Western blot applications. Only our best-performing antibodies are designated as Picoband, ensuring unmatched performance.
Application	ELISA, WB
Clonality	Polyclonal
Formulation	Each vial contains 4 mg Trehalose, 0.9 mg NaCl, 0.2 mg Na ₂ HPO ₄ .
Storage Instructions	At -20°C for one year from date of receipt. After reconstitution, at 4°C for one month. It can also be aliquotted and stored frozen at -20°C for six months. Avoid repeated freezing and thawing.
Host	Rabbit
Uniprot ID	Q96CW5

Technical Details

Immunogen	E.coli-derived human TUBGCP3 recombinant protein (Position: M1-R802).
Recommended Detection Systems	Boster recommends Enhanced Chemiluminescent Kit with anti-Rabbit IgG (EK1002) for Western blot.
Cross Reactivity	No cross-reactivity with other proteins.
Isotype	Rabbit IgG
Form	Lyophilized
Concentration	Adding 0.2 ml of distilled water will yield a concentration of 500 ug/ml.

Purification	Immunogen affinity purified.
Suggested Dilutions	Western blot, 0.1-0.25 ug/ml, Human ELISA, 0.1-0.5 ug/ml, -

Anti-TUBGCP3 Antibody Picoband® (A10799-2) Images



Western blot analysis of TUBGCP3 using anti-TUBGCP3 antibody (A10799-2). Electrophoresis was performed on a 5-20% SDS-PAGE gel at 70V (Stacking gel) / 90V (Resolving gel) for 2-3 hours. The sample well of each lane was loaded with 30 ug of sample under reducing conditions. Lane 1: human 293T whole cell lysates, Lane 2: human Jurkat whole cell lysates, Lane 3: human Hela whole cell lysates. After electrophoresis, proteins were transferred to a nitrocellulose membrane at 150 mA for 50-90 minutes. Blocked the membrane with 5% non-fat milk/TBS for 1.5 hour at RT. The membrane was incubated with rabbit anti-TUBGCP3 antigen affinity purified polyclonal antibody (Catalog # A10799-2) at 0.25 ug/mL overnight at 4°C, then washed with TBS-0.1%Tween 3 times with 5 minutes each and probed with a goat anti-rabbit IgG-HRP secondary antibody at a dilution of 1:5000 for 1.5 hour at RT. The signal is developed using an Enhanced Chemiluminescent detection (ECL) kit (Catalog # EK1002) with Tanon 5200 system. A specific band was detected for TUBGCP3 at approximately 104 kDa. The expected band size for TUBGCP3 is at 104 kDa.

Submit a product review to Biocompare.com

Submit a review of this product to Biocompare.com to receive a \$20 Amazon.com giftcard! Your reviews help your fellow scientists make the right decisions. Thank you for your contribution.



Anti-TUBGCP3 Antibody

For Research Use Only. Not for use in diagnostic procedures.