

## Anti-LGI3 Antibody

Catalog Number: A10809

### About LGI3

The leucine-rich, glioma inactivated gene 3 (LGI3) is a member of the LGI family in which LGI1 is the exemplar. The LGI family consists of four of highly related proteins containing leucine-rich repeats (LRRs) which are highly similar to other transmembrane signaling molecules and receptors. LGI1 has been identified as a candidate tumor suppressor gene for glioma and plays a role in autodominant lateral temporal epilepsy (ADTLE), an epileptic syndrome characterized by focal seizures with predominant auditory symptoms. Despite its high homology with LGI1 and similar pattern of expression, mutations in LGI3 have not been found to be associated with ADTLE. LGI3 expression is induced in rat astrocyte cultures by the amyloid beta (A $\beta$ ) peptide and accumulated on neuronal plasma membranes of aged monkey brains and co-localized with A $\beta$ .

### Overview

Product Name	Anti-LGI3 Antibody
Reactive Species	Human, Mouse, Rat
Description	Boster Bio Anti-LGI3 Antibody (Catalog # A10809). Tested in ELISA, WB applications. This antibody reacts with Human, Mouse, Rat.
Application	ELISA, WB
Clonality	Polyclonal
Formulation	LGI3 Antibody is supplied in PBS containing 0.02% sodium azide.
Storage Instructions	LGI3 antibody can be stored at 4°C for three months and -20°C, stable for up to one year. Avoid repeated freeze-thaw cycles. Antibodies should not be exposed to prolonged high temperatures.
Host	Rabbit
Uniprot ID	Q8N145

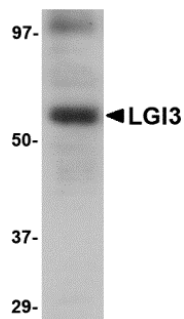
### Technical Details

Immunogen	LGI3 antibody was raised against a 12 amino acid synthetic peptide from near the center of human LGI3. The immunogen is located within amino acids 390 - 440 of LGI3.
Predicted Reactive Species	Mouse
Cross Reactivity	Two isoforms of LGI3 are known to exist; this LGI3 antibody will recognize both. This LGI3 antibody is predicted to be specific to LGI3 and not recognize other LGI proteins. The observed higher MW band may represent a PTM form of LGI3.
Isotype	IgG
Form	Liquid

Concentration	1 mg/mL
Purification	LGI3 Antibody is affinity chromatography purified via peptide column.
Suggested Dilutions	LGI3 antibody can be used for the detection of LGI3 by Western blot at 1 ug/mL. Antibody validated: Western Blot in human samples. All other applications and species not yet tested. Optimal dilutions for each application should be determined by the researcher.

## Anti-LGI3 Antibody (A10809) Images

---



Western blot analysis of LGI3 in human brain tissue lysate with LGI3 antibody at 1 ug/mL.

---

### Submit a product review to Biocompare.com

Submit a review of this product to Biocompare.com to receive a \$20 Amazon.com giftcard! Your reviews help your fellow scientists make the right decisions. Thank you for your contribution.



### Anti-LGI3 Antibody

For Research Use Only. Not for use in diagnostic procedures.