

## Anti-TUBB6 Antibody (Center)

Catalog Number: A10831

### About TUBB6

Tubulin is the major constituent of microtubules. It binds two moles of GTP, one at an exchangeable site on the beta chain and one at a non-exchangeable site on the alpha-chain (By similarity).

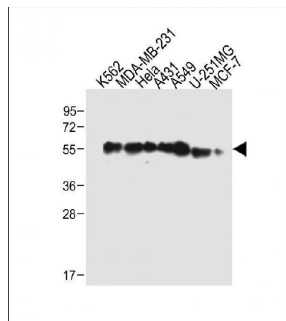
### Overview

Product Name	Anti-TUBB6 Antibody (Center)
Reactive Species	Human
Description	Boster Bio Anti-TUBB6 Antibody (Center) (Catalog # A10831). Tested in WB application(s). This antibody reacts with Human.
Application	WB
Clonality	Polyclonal
Formulation	Purified polyclonal antibody supplied in PBS with 0.09% (W/V) sodium azide.
Storage Instructions	Maintain refrigerated at 2-8°C for up to 2 weeks. For long-term storage, store at -20°C in small aliquots to prevent freeze-thaw cycles.
Host	Rabbit
Uniprot ID	Q9BUF5

### Technical Details

Immunogen	This TUBB6 antibody is generated from rabbits immunized with a KLH conjugated synthetic peptide between 139-166 amino acids from the Central region of human TUBB6.
Predicted Reactive Species	Bovine, Monkey, Mouse
Isotype	Rabbit IgG
Purification	This antibody is purified through a protein A column, followed by peptide affinity purification.
Suggested Dilutions	WB: 1:2000

## Anti-TUBB6 Antibody (Center) (A10831) Images



All lanes : Anti-TUBB6 Antibody (Center) at 1:2000 dilution  
Lane 1: K562 whole cell lysate  
Lane 2: MDA-MB-231 whole cell lysate  
Lane 3: HeLa whole cell lysate  
Lane 4: A431 whole cell lysate  
Lane 5: A549 whole cell lysate  
Lane 6: U-251MG whole cell lysate  
Lane 7: MCF-7 whole cell lysate  
Lysates/proteins at 20 µg per lane. Secondary Goat Anti-Rabbit IgG, (H+L), Peroxidase conjugated at 1/10000 dilution. Predicted band size : 50 kDa  
Blocking/Dilution buffer: 5% NFDN/TBST.

## Submit a product review to Biocompare.com

Submit a review of this product to Biocompare.com to receive a \$20 Amazon.com giftcard! Your reviews help your fellow scientists make the right decisions. Thank you for your contribution.



Anti-TUBB6 Antibody (Center)

For Research Use Only. Not for use in diagnostic procedures.