

Anti-FRMPD1 Antibody

Catalog Number: A10887

About FRMPD1

The FERM and PDZ domain containing (FRMPD) protein family consists of four proteins that contain a FERM (Four-point-one, erzin, radixin, moesin) domain and at least one PDZ (PSD-95/Discs large/Zonula-occludens-1) domain. FRMPD1 was initially identified through a yeast two-hybrid screening with Activator of G-protein signaling 3 (AGS3), a protein that acts to stabilize the GDP-bound conformation of Gai, as the bait. FRMPD1 binds to the tetratricopeptide repeat of AGS3 and stabilizes AGS3 in a membrane environment. Suppression of FRMPD1 in Cath.a-differentiated neuronal cells decreased the level of endogenous AGS3 in membrane fractions by ~50% and enhanced the inhibition of forskolin-induced increases in cAMP. Co-immunoprecipitation studies indicate that the interaction of AGS3 with FRMPD1 is mutually exclusive with the interaction of AGS3 with Gai3, suggesting that FRMPD1 may position AGS3 in the membrane where it can then interact with Galphai.

Overview

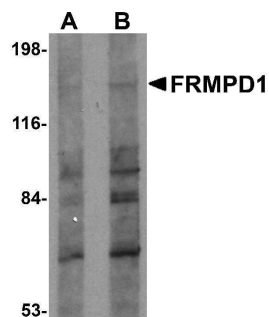
Product Name	Anti-FRMPD1 Antibody
Reactive Species	Human
Description	Boster Bio Anti-FRMPD1 Antibody (Catalog # A10887). Tested in ELISA, WB, IF applications. This antibody reacts with Human.
Application	ELISA, IF, WB
Clonality	Polyclonal
Formulation	FRMPD1 Antibody is supplied in PBS containing 0.02% sodium azide.
Storage Instructions	FRMPD1 antibody can be stored at 4°C for three months and -20°C, stable for up to one year. Avoid repeated freeze-thaw cycles. Antibodies should not be exposed to prolonged high temperatures.
Host	Rabbit
Uniprot ID	Q5SYB0

Technical Details

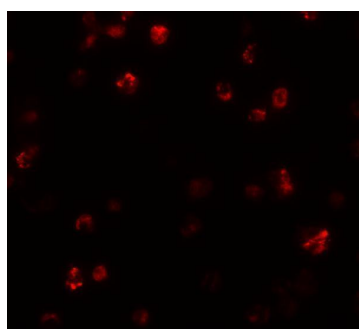
Immunogen	FRMPD1 antibody was raised against a 15 amino acid synthetic peptide from near the carboxy terminus of human FRMPD1. The immunogen is located within amino acids 1330 - 1380 of FRMPD1.
Predicted Reactive Species	Mouse
Isotype	IgG
Form	Liquid
Concentration	1 mg/mL

Purification	FRMPD1 Antibody is affinity chromatography purified via peptide column.
Suggested Dilutions	FRMPD1 antibody can be used for detection of FRMPD1 by Western blot at 1 - 2 ug/mL. Antibody can also be used for immunofluorescence starting at 20 ug/mL. For immunofluorescence start at 5 ug/mL. Antibody validated: Western Blot in human samples and Immunofluorescence in human samples. All other applications and species not yet tested. Optimal dilutions for each application should be determined by the researcher.

Anti-FRMPD1 Antibody (A10887) Images



Western blot analysis of FRMPD1 in K562 cell lysate with FRMPD1 antibody at (A) 1 and (B) 2 ug/mL.



Immunofluorescence of FRMPD1 in K562 cells with FRMPD1 antibody at 20 ug/mL.

Submit a product review to [Biocompare.com](https://www.biocompare.com)

Submit a review of this product to [Biocompare.com](https://www.biocompare.com) to receive a \$20 Amazon.com giftcard! Your reviews help your fellow scientists make the right decisions. Thank you for your contribution.



Anti-FRMPD1 Antibody

For Research Use Only. Not for use in diagnostic procedures.