

## Anti-PDCL2 Antibody Picoband®

Catalog Number: A10894-1

### About PDCL2

This gene encodes a member of the phosducin-like protein family and is a putative modulator of heterotrimeric G proteins. The protein shares extensive amino acid sequence homology with phosducin. Members of the phosducin-like protein family have been shown to bind to the beta-gamma subunits of G proteins.

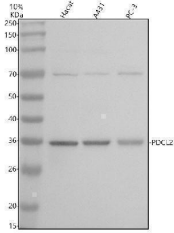
### Overview

Product Name	Anti-PDCL2 Antibody Picoband®
Reactive Species	Human, Mouse, Rat
Description	Boster Bio Anti-PDCL2 Antibody Picoband® catalog # A10894-1. Tested in WB applications. This antibody reacts with Human, Mouse, Rat. The brand Picoband indicates this is a premium antibody that guarantees superior quality, high affinity, and strong signals with minimal background in Western blot applications. Only our best-performing antibodies are designated as Picoband, ensuring unmatched performance.
Application	WB
Clonality	Polyclonal
Formulation	Each vial contains 4 mg Trehalose, 0.9 mg NaCl, 0.2 mg Na <sub>2</sub> HPO <sub>4</sub> .
Storage Instructions	At -20°C for one year from date of receipt. After reconstitution, at 4°C for one month. It can also be aliquotted and stored frozen at -20°C for six months. Avoid repeated freezing and thawing.
Host	Rabbit
Uniprot ID	Q8N4E4

### Technical Details

Immunogen	A synthetic peptide corresponding to a sequence in the middle region of human PDCL2. Human PDCL2 shares 87.5% amino acid (aa) sequence identity with mouse PDCL2.
Form	Lyophilized
Concentration	Adding 0.2 ml of distilled water will yield a concentration of 500 ug/ml.
Purification	Immunogen affinity purified.
Suggested Dilutions	Western blot, 0.25-0.5 ug/ml, Human, Mouse, Rat

## Anti-PDCL2 Antibody Picoband® (A10894-1) Images



Western blot analysis of PDCL2 using anti-PDCL2 antibody (A10894-1). Electrophoresis was performed on a 10% SDS-PAGE gel at 80V (Stacking gel) / 120V (Resolving gel) for 2 hours. The sample well of each lane was loaded with 30 ug of sample under reducing conditions. Lane 1: human Hacat whole cell lysates, Lane 2: human A431 whole cell lysates, Lane 3: human PC-3 whole cell lysates. After electrophoresis, proteins were transferred to a nitrocellulose membrane at 150 mA for 50-90 minutes. Blocked the membrane with 5% non-fat milk/TBS for 1.5 hour at RT. The membrane was incubated with rabbit anti-PDCL2 antigen affinity purified polyclonal antibody (A10894-1) at 0.5 ug/mL overnight at 4°C, then washed with TBS-0.1% Tween 3 times with 5 minutes each and probed with a goat anti-rabbit IgG-HRP secondary antibody at a dilution of 1:5000 for 1.5 hour at RT. The signal is developed using an ECL Plus Western Blotting Substrate (Catalog # AR1196-200) with Tanon 5200 system. A specific band was detected for PDCL2 at approximately 35 kDa. The expected band size for PDCL2 is at 28 kDa.

### Submit a product review to Biocompare.com

Submit a review of this product to Biocompare.com to receive a \$20 Amazon.com giftcard! Your reviews help your fellow scientists make the right decisions. Thank you for your contribution.



### Anti-PDCL2 Antibody

For Research Use Only. Not for use in diagnostic procedures.