

Anti-PLD6 Antibody (Center)

Catalog Number: A10904

About PLD6

Tubulin is the major constituent of microtubules. It binds two moles of GTP, one at an exchangeable site on the beta chain and one at a non-exchangeable site on the alpha-chain (By similarity).

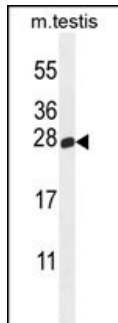
Overview

Product Name	Anti-PLD6 Antibody (Center)
Reactive Species	Human, Mouse
Description	Boster Bio Anti-PLD6 Antibody (Center) (Catalog # A10904). Tested in WB application(s). This antibody reacts with Human, Mouse.
Application	WB
Clonality	Polyclonal
Formulation	Purified polyclonal antibody supplied in PBS with 0.09% (W/V) sodium azide.
Storage Instructions	Maintain refrigerated at 2-8°C for up to 2 weeks. For long-term storage, store at -20°C in small aliquots to prevent freeze-thaw cycles.
Host	Rabbit
Uniprot ID	Q8N2A8

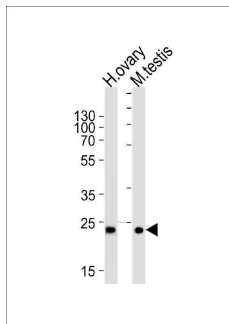
Technical Details

Immunogen	This PLD6 antibody is generated from rabbits immunized with a KLH conjugated synthetic peptide between 125-154 amino acids from of human PLD6.
Predicted Reactive Species	Bovine, Monkey, Mouse
Isotype	Rabbit IgG
Purification	This antibody is purified through a protein A column, followed by peptide affinity purification.
Suggested Dilutions	WB: 1:2000

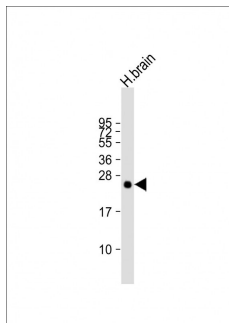
Anti-PLD6 Antibody (Center) (A10904) Images



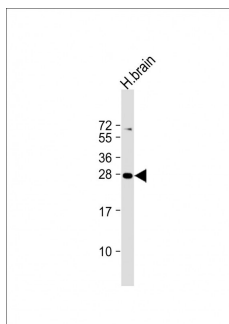
PLD6 Antibody (Center) western blot analysis in mouse testis tissue lysates (35ug/lane). This demonstrates the PLD6 antibody detected the PLD6 protein (arrow).



Western blot analysis of lysates from human ovary and mouse testis tissue lysates (from left to right), using PLD6 Antibody (Center) (Cat. #A10904). A10904 was diluted at 1:1000 at each lane. A goat anti-rabbit IgG H&L (HRP) at 1:5000 dilution was used as the secondary antibody. Lysates at 35ug per lane.



Anti-PLD6 Antibody (Center) at 1:2000 dilution + human brain lysate Lysates/proteins at 20 µg per lane. Secondary Goat Anti-Rabbit IgG, (H+L), Peroxidase conjugated at 1/10000 dilution. Predicted band size : 28 kDa Blocking/Dilution buffer: 5% NFDm/TBST.



Anti-PLD6 Antibody (Center) at 1:2000 dilution + human brain lysate Lysates/proteins at 20 µg per lane. Secondary Goat Anti-Rabbit IgG, (H+L), Peroxidase conjugated at 1/10000 dilution. Predicted band size : 28 kDa Blocking/Dilution buffer: 5% NFDm/TBST.

Submit a product review to Biocompare.com

Submit a review of this product to Biocompare.com to receive a \$20 Amazon.com giftcard! Your reviews help your fellow scientists make the right decisions. Thank you for your contribution.



Anti-PLD6 Antibody (Center)

For Research Use Only. Not for use in diagnostic procedures.