

Anti-IFI44 Antibody Picoband®

Catalog Number: A10907-1

About IFI44

Acts upstream of or within cellular response to virus and response to bacterium. Predicted to be located in cytoplasm. Is expressed in central nervous system and retina. Orthologous to human IFI44 (interferon induced protein 44).

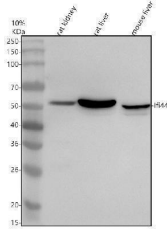
Overview

Product Name	Anti-IFI44 Antibody Picoband®
Reactive Species	Mouse, Rat
Description	Boster Bio Anti-IFI44 Antibody Picoband® catalog # A10907-1. Tested in WB, Flow Cytometry, ELISA applications. This antibody reacts with Mouse, Rat. The brand Picoband indicates this is a premium antibody that guarantees superior quality, high affinity, and strong signals with minimal background in Western blot applications. Only our best-performing antibodies are designated as Picoband, ensuring unmatched performance.
Application	ELISA, Flow Cytometry, WB
Clonality	Polyclonal
Formulation	Each vial contains 4 mg Trehalose, 0.9 mg NaCl, 0.2 mg Na ₂ HPO ₄ .
Storage Instructions	At -20°C for one year from date of receipt. After reconstitution, at 4°C for one month. It can also be aliquotted and stored frozen at -20°C for six months. Avoid repeated freezing and thawing.
Host	Rabbit
Uniprot ID	Q8BV66

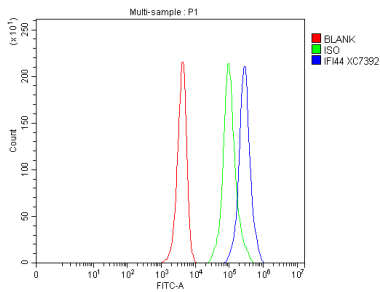
Technical Details

Immunogen	E.coli-derived mouse IFI44 recombinant protein (Position: M1-H370). Mouse IFI44 shares 54.9% amino acid (aa) sequence identity with humanIFI44.
Form	Lyophilized
Concentration	Adding 0.2 ml of distilled water will yield a concentration of 500 ug/ml.
Purification	Immunogen affinity purified.
Suggested Dilutions	Western blot, 0.25-0.5 ug/ml, Mouse, Rat Flow Cytometry (Fixed), 1-3 ug/1x10 ⁶ cells, Mouse ELISA, 0.1-0.5 ug/ml

Anti-IFI44 Antibody Picoband® (A10907-1) Images



Western blot analysis of IFI44 using anti-IFI44 antibody (A10907-1). Electrophoresis was performed on a 10% SDS-PAGE gel at 80V (Stacking gel) / 120V (Resolving gel) for 2 hours. The sample well of each lane was loaded with 30 ug of sample under reducing conditions. Lane 1: rat kidney tissue lysates, Lane 2: rat liver tissue lysates, Lane 3: mouse liver tissue lysates. After electrophoresis, proteins were transferred to a nitrocellulose membrane at 150 mA for 50-90 minutes. Blocked the membrane with 5% non-fat milk/TBS for 1.5 hour at RT. The membrane was incubated with rabbit anti-IFI44 antigen affinity purified polyclonal antibody (A10907-1) at 0.5 ug/mL overnight at 4°C, then washed with TBS-0.1% Tween 3 times with 5 minutes each and probed with a goat anti-rabbit IgG-HRP secondary antibody at a dilution of 1:5000 for 1.5 hour at RT. The signal is developed using an ECL Plus Western Blotting Substrate (Catalog # AR1196-200) with Tanon 5200 system. A specific band was detected for IFI44 at approximately 50 kDa. The expected band size for IFI44 is at 50 kDa.



Flow Cytometry analysis of Hepa1-6 cells using anti-IFI44 antibody (A10907-1). Overlay histogram showing Hepa1-6 cells stained with A10907-1 (Blue line). To facilitate intracellular staining, cells were fixed with 4% paraformaldehyde and permeabilized with permeabilization buffer. The cells were blocked with 10% normal goat serum. And then incubated with rabbit anti-IFI44 Antibody (A10907-1, 1 ug/1x10⁶ cells) for 30 min at 20°C. DyLight®488 conjugated goat anti-rabbit IgG (BA1127, 5-10 ug/1x10⁶ cells) was used as secondary antibody for 30 minutes at 20°C. Isotype control antibody (Green line) was rabbit IgG (1 ug/1x10⁶) used under the same conditions. Unlabelled sample without incubation with primary antibody and secondary antibody (Red line) was used as a blank control.

Submit a product review to Biocompare.com

Submit a review of this product to Biocompare.com to receive a \$20 Amazon.com giftcard! Your reviews help your fellow scientists make the right decisions. Thank you for your contribution.



Anti-IFI44 Antibody

For Research Use Only. Not for use in diagnostic procedures.