

Anti-TAS2R10 Antibody Picoband®

Catalog Number: A10959-2

About TAS2R10

Taste receptor type 2 member 10 is a protein that in humans is encoded by the TAS2R10 gene. This gene product belongs to the family of candidate taste receptors that are members of the G-protein-coupled receptor superfamily. These proteins are specifically expressed in the taste receptor cells of the tongue and palate epithelia. They are organized in the genome in clusters and are genetically linked to loci that influence bitter perception in mice and humans. In functional expression studies, they respond to bitter tastants. This gene maps to the taste receptor gene cluster on chromosome 12p13.

Overview

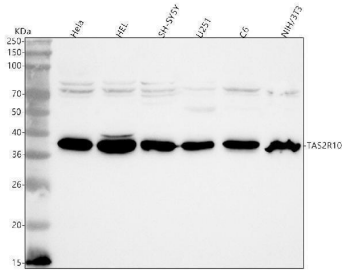
Product Name	Anti-TAS2R10 Antibody Picoband®
Reactive Species	Human, Mouse, Rat
Description	Boster Bio Anti-TAS2R10 Antibody Picoband® catalog # A10959-2. Tested in WB, IHC, IF, FCM, ELISA applications. This antibody reacts with Human, Mouse, Rat. The brand Picoband indicates this is a premium antibody that guarantees superior quality, high affinity, and strong signals with minimal background in Western blot applications. Only our best-performing antibodies are designated as Picoband, ensuring unmatched performance.
Application	ELISA, Flow Cytometry, IF, IHC, WB
Clonality	Polyclonal
Formulation	Each vial contains 4 mg Trehalose, 0.9 mg NaCl, 0.2 mg Na ₂ HPO ₄ .
Storage Instructions	At -20°C for one year from date of receipt. After reconstitution, at 4°C for one month. It can also be aliquotted and stored frozen at -20°C for six months. Avoid repeated freezing and thawing.
Host	Rabbit
Uniprot ID	Q9NYW0

Technical Details

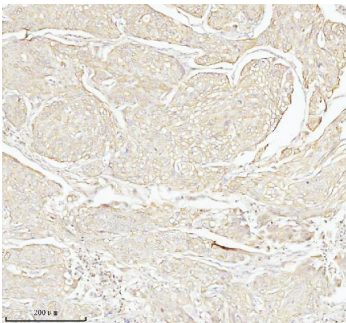
Immunogen	E.coli-derived human TAS2R10 recombinant protein (Position: E16-T307).
Recommended Detection Systems	Boster recommends Enhanced Chemiluminescent Kit with anti-Rabbit IgG (EK1002) for Western blot, and HRP Conjugated anti-Rabbit IgG Super Vision Assay Kit (SV0002-1) for IHC(P).
Form	Lyophilized
Concentration	Adding 0.2 ml of distilled water will yield a concentration of 500 µg/ml.
Purification	Immunogen affinity purified.
Suggested Dilutions	Western blot, 0.1-0.25 µg/ml, Human, Mouse, Rat

Immunohistochemistry(Paraffin-embedded Section), 2-5 ug/ml, Human
Immunofluorescence, 5 ug/ml, Human
Flow Cytometry (Fixed), 1-3 ug/1x10⁶ cells, Human
ELISA, 0.1-0.5 ug/ml, -

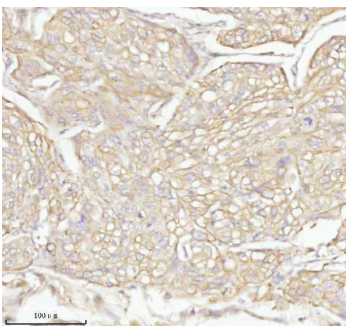
Anti-TAS2R10 Antibody Picoband® (A10959-2) Images



Western blot analysis of TAS2R10 using anti-TAS2R10 antibody (A10959-2). Electrophoresis was performed on a 5-20% SDS-PAGE gel at 70V (Stacking gel) / 90V (Resolving gel) for 2-3 hours. The sample well of each lane was loaded with 30 ug of sample under reducing conditions. Lane 1: human Hela whole cell lysates, Lane 2: human HEL whole cell lysates, Lane 3: human SH-SY5Y whole cell lysates, Lane 4: human U251 whole cell lysates, Lane 5: rat C6 whole cell lysates, Lane 6: mouse NIH/3T3 whole cell lysates. After electrophoresis, proteins were transferred to a nitrocellulose membrane at 150 mA for 50-90 minutes. Blocked the membrane with 5% non-fat milk/TBS for 1.5 hour at RT. The membrane was incubated with rabbit anti-TAS2R10 antigen affinity purified polyclonal antibody (Catalog # A10959-2) at 0.25 ug/mL overnight at 4°C, then washed with TBS-0.1%Tween 3 times with 5 minutes each and probed with a goat anti-rabbit IgG-HRP secondary antibody at a dilution of 1:5000 for 1.5 hour at RT. The signal is developed using an Enhanced Chemiluminescent detection (ECL) kit (Catalog # EK1002) with Tanon 5200 system. A specific band was detected for TAS2R10 at approximately 38 kDa. The expected band size for TAS2R10 is at 35 kDa.

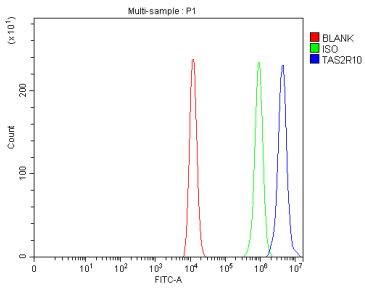


IHC analysis of TAS2R10 using anti-TAS2R10 antibody (A10959-2). TAS2R10 was detected in a paraffin-embedded section of human cervix squamous cell carcinoma tissue. Heat mediated antigen retrieval was performed in EDTA buffer (pH 8.0, epitope retrieval solution). The tissue section was blocked with 10% goat serum. The tissue section was then incubated with 2 ug/ml rabbit anti-TAS2R10 Antibody (A10959-2) overnight at 4°C. Peroxidase Conjugated Goat Anti-rabbit IgG was used as secondary antibody and incubated for 30 minutes at 37°C. The tissue section was developed using HRP Conjugated Rabbit IgG Super Vision Assay Kit (Catalog # SV0002) with DAB as the chromogen.

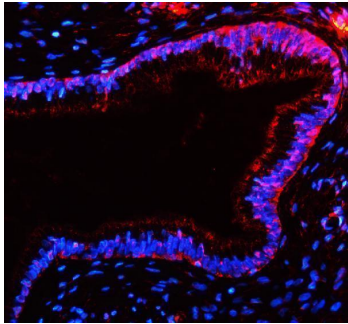


IHC analysis of TAS2R10 using anti-TAS2R10 antibody (A10959-2). TAS2R10 was detected in a paraffin-embedded section of human cervix squamous cell carcinoma tissue. Heat mediated antigen retrieval was performed in EDTA buffer (pH 8.0, epitope retrieval solution). The tissue section was blocked with 10% goat serum. The tissue section was then incubated with 2 ug/ml rabbit anti-TAS2R10 Antibody (A10959-2) overnight at 4°C. Peroxidase Conjugated Goat Anti-rabbit IgG was used as secondary antibody and incubated for 30 minutes at 37°C. The tissue section was developed using HRP Conjugated Rabbit IgG Super Vision Assay Kit (Catalog # SV0002) with DAB as the chromogen.

Flow Cytometry analysis of HEL cells using anti-TAS2R10 antibody (A10959-2). Overlay histogram showing HEL cells stained with A10959-2 (Blue line). The cells were fixed with



4% paraformaldehyde and blocked with 10% normal goat serum. And then incubated with rabbit anti-TAS2R10 Antibody (A10959-2, 1 ug/1x10⁶ cells) for 30 min at 20°C. DyLight®488 conjugated goat anti-rabbit IgG (BA1127, 5-10 ug/1x10⁶ cells) was used as secondary antibody for 30 minutes at 20°C. Isotype control antibody (Green line) was rabbit IgG (1 ug/1x10⁶) used under the same conditions. Unlabelled sample (Red line) was also used as a control.



IF analysis of TAS2R10 using anti-TAS2R10 antibody (A10959-2). TAS2R10 was detected in a paraffin-embedded section of human cervix cancer tissue. Heat mediated antigen retrieval was performed in EDTA buffer (pH 8.0, epitope retrieval solution). The tissue section was blocked with 10% goat serum. The tissue section was then incubated with 5 ug/mL rabbit anti-TAS2R10 Antibody (A10959-2) overnight at 4°C. DyLight®594 Conjugated Goat Anti-Rabbit IgG (BA1142) was used as secondary antibody at 1:500 dilution and incubated for 30 minutes at 37°C. The section was counterstained with DAPI. Visualize using a fluorescence microscope and filter sets appropriate for the label used.

Submit a product review to [Biocompare.com](https://www.biocompare.com)

Submit a review of this product to [Biocompare.com](https://www.biocompare.com) to receive a \$20 Amazon.com giftcard! Your reviews help your fellow scientists make the right decisions. Thank you for your contribution.



Anti-TAS2R10 Antibody

For Research Use Only. Not for use in diagnostic procedures.