

Anti-MTERFD1 MTERF3 Antibody

Catalog Number: A10983

About MTERFD1

Members of the mTERF (mitochondrial transcription termination factor) family, are mitochondrial proteins that are believed to be transcription termination factors. MTERFD1 is composed of three leucine zippers that form a three-stranded coiled-coil that binds to DNA. It binds promoter DNA and acts as a mitochondrial transcription regulator. It has been suggested that only the phosphorylated form of MTERFD1 has transcription termination activity. A closely related mTERF family member, MTERFD3, is believed to be involved in cell cycle regulation and cell growth by modulating mitochondrial transcription.

Overview

| | |
|----------------------|------------------------------------------------------------------------------------------------------------------------------------------------|
| Product Name | Anti-MTERFD1 MTERF3 Antibody |
| Reactive Species | Human, Mouse |
| Description | Boster Bio Anti-MTERFD1 MTERF3 Antibody (Catalog # A10983). Tested in ELISA, WB, ICC, IF applications. This antibody reacts with Human, Mouse. |
| Application | ELISA, IF, ICC, WB |
| Clonality | Polyclonal |
| Formulation | MTERFD1 Antibody is supplied in PBS containing 0.02% sodium azide. |
| Storage Instructions | MTERFD1 antibody can be stored at 4°C for three months and -20°C, stable for up to one year. |
| Host | Rabbit |
| Uniprot ID | Q96E29 |

Technical Details

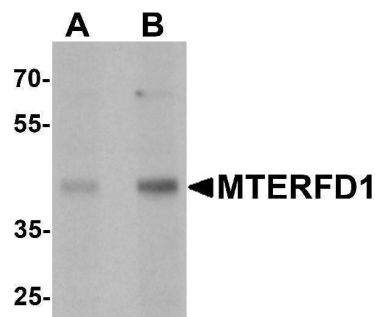
| | |
|----------------------------|-----------------------------------------------------------------------------------------------------------------------------------------------------------------------------|
| Immunogen | MTERFD1 antibody was raised against a 17 amino acid peptide near the carboxy terminus of human MTERFD1. The immunogen is located within the last 50 amino acids of MTERFD1. |
| Predicted Reactive Species | Chicken, Rat |
| Cross Reactivity | At least three isoforms of MTERFD1 are known to exist. MTERFD1 antibody is predicted to not cross-react with other MTERFD protein family members. |
| Isotype | IgG |
| Form | Liquid |
| Concentration | 1 mg/mL |
| Purification | MTERFD1 Antibody is affinity chromatography purified via peptide column. |

Suggested Dilutions

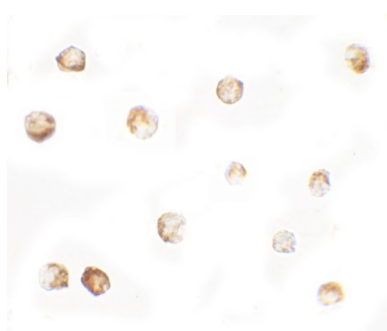
MTERFD1 Antibody can be used for detection of MTERFD1 by Western blot starting at 1 ug/mL. Antibody can also be used for Immunocytochemistry starting at 5 ug/mL. For immunofluorescence start at 20 ug/mL.

Antibody validated: Western Blot in mouse samples; Immunocytochemistry in mouse samples and Immunofluorescence in mouse samples. All other applications and species not yet tested. Optimal dilutions for each application should be determined by the researcher.

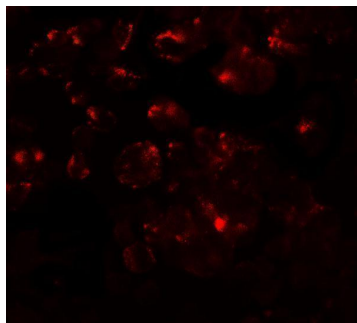
Anti-MTERFD1 MTERF3 Antibody (A10983) Images



Western blot analysis of MTERFD1 in 3T3 cell lysate with MTERFD1 antibody at (A) 1 and (B) 2 ug/mL.



Immunocytochemistry of MTERFD1 in 3T3 cells with MTERFD1 antibody at 5 ug/mL.



Immunofluorescence of MTERFD1 in 3T3 cells with MTERFD1 antibody at 20 ug/mL.

Submit a product review to [Biocompare.com](https://www.biocompare.com)

Submit a review of this product to [Biocompare.com](https://www.biocompare.com) to receive a \$20 Amazon.com giftcard! Your reviews help your fellow scientists make the right decisions. Thank you for your contribution.



Anti-MTERFD1 MTERF3 Antibody

For Research Use Only. Not for use in diagnostic procedures.