

## Anti-SNX16 Rabbit Polyclonal Antibody

Catalog Number: A11003

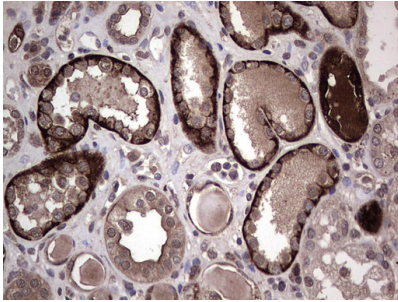
### Overview

Product Name	Anti-SNX16 Rabbit Polyclonal Antibody
Reactive Species	Human
Description	Boster Bio Rabbit polyclonal SNX16 Antibody. Catalog# A11003. Tested in IHC, WB. This antibody reacts with Human.
Conjugate	Unconjugated
Application	IHC, WB
Clonality	Polyclonal
Formulation	PBS (pH 7.3) containing 1% stabilizing protein, 50% glycerol and 0.02% sodium azide. This antibody is supplied in a stabilized formulation. Compatibility with conjugation reactions depends on the chemistry of the conjugation method used. For conjugation methods that are not compatible with the stabilizing components present in this formulation, a carrier-free antibody format is required.
Storage Instructions	Store at -20°C as received.
Host	Rabbit
Uniprot ID	P57768

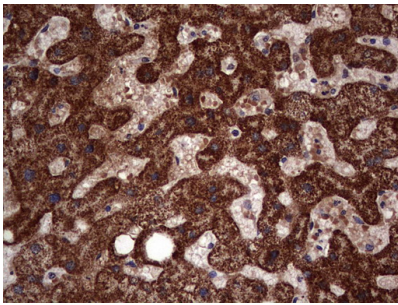
### Technical Details

Immunogen	Synthetic peptide conjugated to KLH derived from within residues 70-150 of Human SNX16.
Isotype	IgG
Concentration	1 mg/ml
Purification	Purified from the immunized serum by affinity chromatography (Protein A/G)
Suggested Dilutions	WB 1:500, IHC 1:150

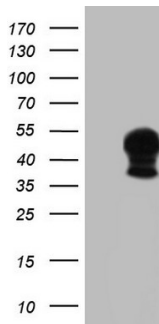
## Anti-SNX16 Rabbit Polyclonal Antibody (A11003) Images



Immunohistochemical staining of paraffin-embedded Human Kidney tissue within the normal limits using Rabbit polyclonal anti-SNX16 antibody at (Heat-induced epitope retrieval by 1 mM EDTA in 10mM Tris



Immunohistochemical staining of paraffin-embedded Human liver tissue within the normal limits using Rabbit polyclonal anti-SNX16 antibody at (Heat-induced epitope retrieval by 1 mM EDTA in 10mM Tris



HEK293T cells were transfected with the pCMV6-ENTRY control (Left lane) or pCMV6-ENTRY SNX16 (Right lane) cDNA for 48 hrs and lysed. Equivalent amounts of cell lysates (5 ug per lane) were separated by SDS-PAGE and immunoblotted with Rabbit.

### Submit a product review to Biocompare.com

Submit a review of this product to Biocompare.com to receive a \$20 Amazon.com giftcard! Your reviews help your fellow scientists make the right decisions. Thank you for your contribution.



Anti-SNX16 Rabbit Polyclonal Antibody

For Research Use Only. Not for use in diagnostic procedures.