

Anti-Kelch-like protein 1 KLHL1 Antibody

Catalog Number: A11010-1

About KLHL1

The mammalian Kelch-like 1 (KLHL1) was initially discovered as a homolog to the *Drosophila* Kelch gene that is highly expressed in several brain tissues. The predicted protein domain structure of KLHL1 is characteristic of a number of proteins that bind actin, form dimers, and often act as actin-organizing proteins. Based on the presence of anti-sense RNA that spans the transcription and translation start sites as well as the first splice site of KLHL1 in brain tissue of individuals suffering from the neurodegenerative disorder spinocerebellar ataxia type 8 (SCA8), it has been suggested that KLHL1 is involved in this disease and that regulation of KLHL1 protein may be affected by antisense RNA expression.

Overview

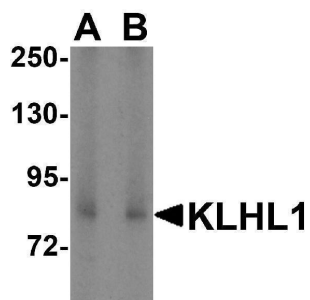
Product Name	Anti-Kelch-like protein 1 KLHL1 Antibody
Reactive Species	Human, Rat
Description	Boster Bio Anti-Kelch-like protein 1 KLHL1 Antibody (Catalog # A11010-1). Tested in ELISA, WB, IHC-P applications. This antibody reacts with Human, Rat.
Application	ELISA, IHC-P, WB
Clonality	Polyclonal
Formulation	KLHL1 Antibody is supplied in PBS containing 0.02% sodium azide.
Storage Instructions	KLHL1 antibody can be stored at 4°C for three months and -20°C, stable for up to one year. Avoid repeated freeze-thaw cycles. Antibodies should not be exposed to prolonged high temperatures.
Host	Rabbit
Uniprot ID	Q9NR64

Technical Details

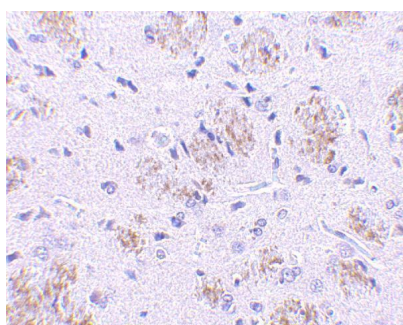
Immunogen	KLHL1 antibody was raised against a 14 amino acid synthetic peptide from near the amino-terminus of human KLHL1. The immunogen is located within the first 50 amino acids of KLHL1.
Predicted Reactive Species	Mouse
Isotype	IgG
Form	Liquid
Concentration	1 mg/mL
Purification	KLHL1 Antibody is immunoaffinity purified.
Suggested Dilutions	KLHL1 antibody can be used for the detection of KLHL1 by Western blot at 2 - 4 ug/mL. Antibody can also be used for immunohistochemistry starting at 10 ug/mL.

Antibody validated: Western Blot in human samples and Immunohistochemistry in rat samples. All other applications and species not yet tested. Optimal dilutions for each application should be determined by the researcher.

Anti-Kelch-like protein 1 KLHL1 Antibody (A11010-1) Images



Western blot analysis of KLHL1 in HeLa cell lysate with KLHL1 antibody at (A) 2 and (B) 4 ug/mL.



Immunohistochemistry of KLHL1 in rat brain tissue with KLHL1 antibody at 10 ug/mL.

Submit a product review to Biocompare.com

Submit a review of this product to Biocompare.com to receive a \$20 Amazon.com giftcard! Your reviews help your fellow scientists make the right decisions. Thank you for your contribution.



Anti-Kelch-like protein 1 KLHL1 Antibody

For Research Use Only. Not for use in diagnostic procedures.