

## Anti-Rab 20 Antibody

Catalog Number: A11018

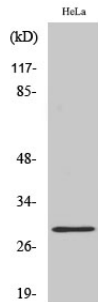
### Overview

Product Name	Anti-Rab 20 Antibody
Reactive Species	Human, Mouse
Description	Boster Bio Anti-Rab 20 Antibody catalog # A11018. Tested in WB, IHC, IF, ELISA applications. This antibody reacts with Human, Mouse.
Application	ELISA, IF, IHC, WB
Clonality	Polyclonal
Formulation	Liquid in PBS containing 50% glycerol, 0.5% stabilizing protein and 0.02% sodium azide. This antibody is supplied in a stabilized formulation. Compatibility with conjugation reactions depends on the chemistry of the conjugation method used. For conjugation methods that are not compatible with the stabilizing components present in this formulation, a carrier-free antibody format is required.
Storage Instructions	Store at -20°C for one year. For short term storage and frequent use, store at 4°C for up to one month. Avoid repeated freeze-thaw cycles.
Host	Rabbit
Uniprot ID	Q9NX57

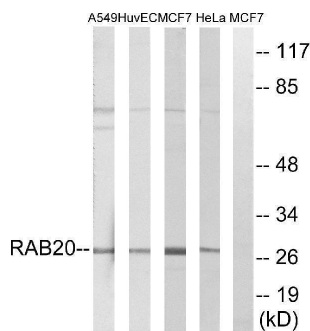
### Technical Details

Immunogen	The antiserum was produced against synthesized peptide derived from human RAB20. AA range:115-164
Isotype	IgG
Form	Liquid
Concentration	1 mg/ml
Purification	Immunogen affinity purified
Suggested Dilutions	WB 1:500-1:2000 IHC 1:100-1:300 ELISA 1:10000 IF 1:50-200

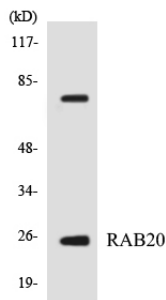
## Anti-Rab 20 Antibody (A11018) Images



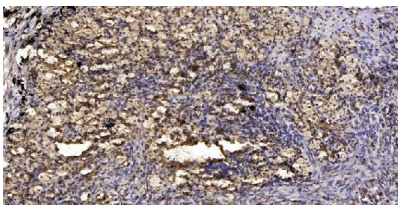
Western Blot analysis of A549 cells using Rab 20 Polyclonal Antibody diluted at 1:2000



Western blot analysis of lysates from HeLa, MCF-7, HUVEC, and A549 cells, using RAB20 Antibody. The lane on the right is blocked with the synthesized peptide.



Western blot analysis of the lysates from HeLa cells using RAB20 antibody.



Immunohistochemical analysis of paraffin-embedded human Squamous cell carcinoma of lung. 1, Antibody was diluted at 1:200 (4° overnight). 2, Tris-EDTA, pH9.0 was used for antigen retrieval. 3, Secondary antibody was diluted at 1:200 (room temperature, 45min).

## Submit a product review to Biocompare.com

Submit a review of this product to Biocompare.com to receive a \$20 Amazon.com giftcard! Your reviews help your fellow scientists make the right decisions. Thank you for your contribution.



Anti-Rab 20 Antibody

For Research Use Only. Not for use in diagnostic procedures.