

## Anti-Centromere protein O CENPO Antibody

Catalog Number: A11021

### About CENPO

Accurate chromosome segregation during mitosis requires a kinetochore to assemble correctly at the centromere of each chromatid and form a dynamic interface with the microtubules of the mitotic spindle. The kinetochore assembly includes the multisubunit CENP-H/I complex which can be divided into three functional classes based on phenotype analysis. One of these classes is referred to as the CENP-O class of proteins of which CENPO is the exemplar. These proteins form a stable complex with each other and are required for proper kinetochore function and for recovery from mitotic spindle damage. CENPO has also been shown to be an auto-antigen in a small population of anti-centromere antibodies- (ACA-) positive patients with scleroderma.

### Overview

Product Name	Anti-Centromere protein O CENPO Antibody
Reactive Species	Human, Mouse, Rat
Description	Boster Bio Anti-Centromere protein O CENPO Antibody (Catalog # A11021). Tested in ELISA, WB applications. This antibody reacts with Human, Mouse, Rat.
Application	ELISA, WB
Clonality	Polyclonal
Formulation	CENPO Antibody is supplied in PBS containing 0.02% sodium azide.
Storage Instructions	CENPO antibody can be stored at 4°C for three months and -20°C, stable for up to one year. Avoid repeated freeze-thaw cycles. Antibodies should not be exposed to prolonged high temperatures.
Host	Rabbit
Uniprot ID	Q9BU64

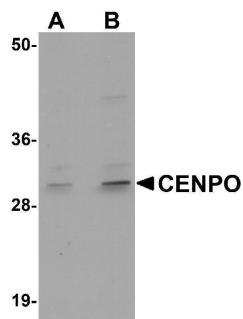
### Technical Details

Immunogen	CENPO antibody was raised against a 16 amino acid synthetic peptide from near the center of human CENPO. The immunogen is located within amino acids 170 - 220 of CENPO.
Predicted Reactive Species	Bovine
Isotype	IgG
Form	Liquid
Concentration	1 mg/mL
Purification	CENPO Antibody is affinity chromatography purified via peptide column.

**Suggested Dilutions**

CENPO antibody can be used for detection of CENPO by Western blot at 1 - 2 ug/mL.  
Antibody validated: Western Blot in mouse samples. All other applications and species not yet tested. Optimal dilutions for each application should be determined by the researcher.

## Anti-Centromere protein O CENPO Antibody (A11021) Images



Western blot analysis of CENPO in mouse kidney tissue lysate with CENPO antibody at (A) 1 and (B) 2 ug/mL.

### Submit a product review to Biocompare.com

Submit a review of this product to Biocompare.com to receive a \$20 Amazon.com giftcard! Your reviews help your fellow scientists make the right decisions. Thank you for your contribution.



Anti-Centromere protein O CENPO Antibody

For Research Use Only. Not for use in diagnostic procedures.