

## Anti-PLEKHB1 Antibody Picoband®

Catalog Number: A11037-1

### About PLEKHB1

PLEKHB1, also named as Evec tin-1, EVT1, KPL1, PHR1 and PHRET1, is required for proper localization of retinogeniculate projections but not for eye-specific segregation. PLEKHB1 has 4 isoforms with MW from 21-27kd. It has Dimerform with MW 42-54 kDa.

### Overview

Product Name	Anti-PLEKHB1 Antibody Picoband®
Reactive Species	Human, Monkey, Mouse, Rat
Description	Boster Bio Anti-PLEKHB1 Antibody Picoband® catalog # A11037-1. Tested in WB, ELISA applications. This antibody reacts with Human, Monkey, Mouse, Rat. The brand Picoband indicates this is a premium antibody that guarantees superior quality, high affinity, and strong signals with minimal background in Western blot applications. Only our best-performing antibodies are designated as Picoband, ensuring unmatched performance.
Application	ELISA, WB
Clonality	Polyclonal
Formulation	Each vial contains 4 mg Trehalose, 0.9 mg NaCl, 0.2 mg Na <sub>2</sub> HPO <sub>4</sub> .
Storage Instructions	At -20°C for one year from date of receipt. After reconstitution, at 4°C for one month. It can also be aliquotted and stored frozen at -20°C for six months. Avoid repeated freezing and thawing.
Host	Rabbit
Uniprot ID	Q9UF11

### Technical Details

Immunogen	E.coli-derived human PLEKHB1 recombinant protein (Position: H82-S214). Human PLEKHB1 shares 93.9% and 92.4% amino acid (aa) sequence identity with mouse and rat PLEKHB1, respectively.
Recommended Detection Systems	Boster recommends Enhanced Chemiluminescent Kit with anti-Rabbit IgG (EK1002) for Western blot.
Cross Reactivity	No cross reactivity with other proteins.
Isotype	IgG
Form	Lyophilized
Concentration	Adding 0.2 ml of distilled water will yield a concentration of 500 µg/ml.
Purification	Immunogen affinity purified.

Suggested Dilutions

Western blot, 0.25-0.5 ug/ml, Human, Monkey, Mouse, Rat  
ELISA, 0.1-0.5 ug/ml, -

## Anti-PLEKHB1 Antibody Picoband® (A11037-1) Images

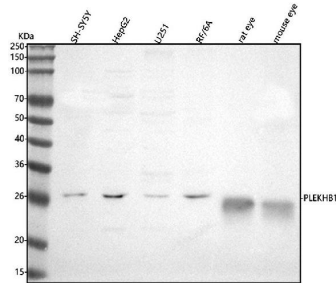


Figure 1. Western blot analysis of PLEKHB1 using anti-PLEKHB1 antibody (A11037-1).

Electrophoresis was performed on a 5-20% SDS-PAGE gel at 70V (Stacking gel) / 90V (Resolving gel) for 2-3 hours. The sample well of each lane was loaded with 30 ug of sample under reducing conditions.

Lane 1: human SH-SY5Y whole cell lysates,

Lane 2: human HepG2 whole cell lysates,

Lane 3: human U251 whole cell lysates,

Lane 4: monkey RF/6A whole cell lysates,

Lane 5: rat eye tissue lysates,

Lane 6: mouse eye tissue lysates.

After electrophoresis, proteins were transferred to a nitrocellulose membrane at 150 mA for 50-90 minutes.

Blocked the membrane with 5% non-fat milk/TBS for 1.5 hour at RT. The membrane was incubated with rabbit anti-PLEKHB1 antigen affinity purified polyclonal antibody (Catalog # A11037-1) at 0.5 ug/mL overnight at 4°C, then washed with TBS-0.1%Tween 3 times with 5 minutes each and probed with a goat anti-rabbit IgG-HRP secondary antibody at a dilution of 1:5000 for 1.5 hour at RT. The signal is developed using an Enhanced Chemiluminescent detection (ECL) kit (Catalog # EK1002) with Tanon 5200 system. A specific band was detected for PLEKHB1 at approximately 27 kDa. The expected band size for PLEKHB1 is at 27 kDa.

### Submit a product review to Biocompare.com

Submit a review of this product to Biocompare.com to receive a \$20 Amazon.com giftcard! Your reviews help your fellow scientists make the right decisions. Thank you for your contribution.



Anti-PLEKHB1 Antibody