

Anti-ATG2B Antibody

Catalog Number: A11053

About ATG2B

Autophagy, the process of bulk degradation of cellular proteins through an autophagosomic-lysosomal pathway is important for normal growth control and may be defective in tumor cells. It is involved in the preservation of cellular nutrients under starvation conditions as well as the normal turnover of cytosolic components. This process is negatively regulated by TOR (Target of rapamycin) through phosphorylation of autophagy protein APG1. Another member of the autophagy family of proteins is ATG2B, one of two homologs of ATG2 that is essential for autophagosome formation and important for regulation of size and distribution of lipid droplets. Relatively high rates of ATG2B mutations were observed in gastric and colorectal carcinomas, suggesting that deregulating the autophagy process may contribute to cancer development.

Overview

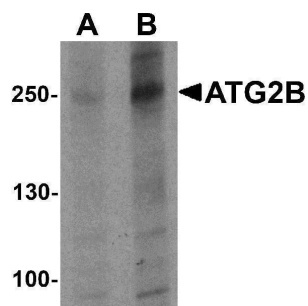
Product Name	Anti-ATG2B Antibody
Reactive Species	Human
Description	Boster Bio Anti-ATG2B Antibody (Catalog # A11053). Tested in ELISA, WB, IF applications. This antibody reacts with Human.
Application	ELISA, IF, WB
Clonality	Polyclonal
Formulation	ATG2B Antibody is supplied in PBS containing 0.02% sodium azide.
Storage Instructions	ATG2B antibody can be stored at 4°C for three months and -20°C, stable for up to one year. Avoid repeated freeze-thaw cycles. Antibodies should not be exposed to prolonged high temperatures.
Host	Rabbit
Uniprot ID	Q96BY7

Technical Details

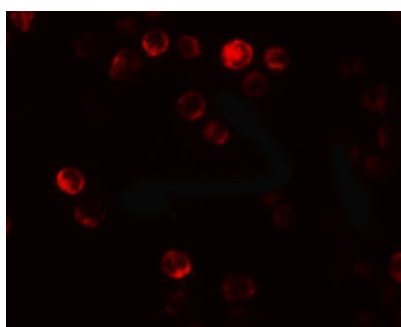
Immunogen	ATG2B antibody was raised against a 19 amino acid synthetic peptide near the amino terminus of human ATG2B. The immunogen is located within amino acids 450 - 500 of ATG2B.
Predicted Reactive Species	Bovine, Mouse
Cross Reactivity	ATG2B antibody is predicted to not cross-react with other ATG2A.
Isotype	IgG
Form	Liquid
Concentration	1 mg/mL

Purification	ATG2B Antibody is affinity chromatography purified via peptide column.
Suggested Dilutions	ATG2B antibody can be used for detection of ATG2B by Western blot at 1 - 2 ug/mL. For immunofluorescence start at 20 ug/mL. Antibody validated: Western Blot in human samples and Immunofluorescence in human samples. All other applications and species not yet tested. Optimal dilutions for each application should be determined by the researcher.

Anti-ATG2B Antibody (A11053) Images



Western blot analysis of ATG2B in K562 cell lysate with ATG2B antibody at (A) 1 and (B) 2 ug/ml



Immunofluorescence of ATG2B in K562 cells with ATG2B antibody at 20 ug/mL.

Submit a product review to [Biocompare.com](https://www.biocompare.com)

Submit a review of this product to [Biocompare.com](https://www.biocompare.com) to receive a \$20 Amazon.com giftcard! Your reviews help your fellow scientists make the right decisions. Thank you for your contribution.



Anti-ATG2B Antibody

For Research Use Only. Not for use in diagnostic procedures.