

Anti-TUBGCP4/Gcp4 Antibody

Catalog Number: A11058

About TUBGCP4

Gamma-tubulin complex is necessary for microtubule nucleation at the centrosome.

Fava F., J. Cell Biol. 147:857-868(1999).

The MGC Project Team; Genome Res. 14:2121-2127(2004).

Ota T., Nat. Genet. 36:40-45(2004).

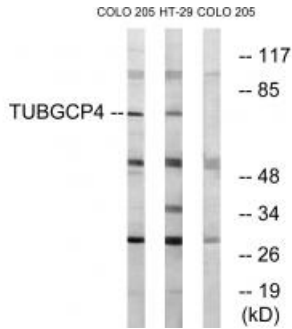
Overview

Product Name	Anti-TUBGCP4/Gcp4 Antibody
Reactive Species	Human, Mouse
Description	Boster Bio Anti-TUBGCP4/Gcp4 Antibody (Catalog # A11058). Tested in WB applications. This antibody reacts with Human, Mouse.
Application	WB
Clonality	Polyclonal
Formulation	Rabbit IgG in phosphate buffered saline (without Mg ²⁺ and Ca ²⁺), pH 7.4, 150mM NaCl, 0.02% sodium azide and 50% glycerol.
Storage Instructions	Store at -20°C for one year. For short term storage and frequent use, store at 4°C for up to one month. Avoid repeated freeze-thaw cycles.
Host	Rabbit
Uniprot ID	Q9UGJ1

Technical Details

Immunogen	Synthesized peptide derived from internal of human TUBGCP4.
Predicted Reactive Species	Chimpanzee, Drosophila, Macaque
Isotype	IgG
Form	Liquid
Concentration	1 mg/ml
Purification	The antibody was affinity-purified from rabbit antiserum by affinity-chromatography using epitope-specific immunogen.
Suggested Dilutions	Western blotting: 1:500~1:3000

Anti-TUBGCP4/Gcp4 Antibody (A11058) Images



Western blot analysis of extracts from COLO cells and HT-29 cells, using TUBGCP4 antibody A11058.

Submit a product review to Biocompare.com

Submit a review of this product to Biocompare.com to receive a \$20 Amazon.com giftcard! Your reviews help your fellow scientists make the right decisions. Thank you for your contribution.



Anti-TUBGCP4/Gcp4 Antibody