

## Anti-TECPR1 Antibody (C-term)

Catalog Number: A11073

### About TECPR1

Probably recognizes and binds to some phosphorylated proteins and promotes their ubiquitination and degradation (By similarity).

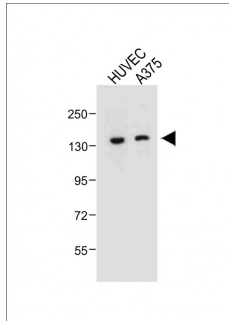
### Overview

Product Name	Anti-TECPR1 Antibody (C-term)
Reactive Species	Human
Description	Boster Bio Anti-TECPR1 Antibody (C-term) (Catalog # A11073). Tested in IHC-P, Flow Cytometry, WB application(s). This antibody reacts with Human.
Application	Flow Cytometry, IHC-P, WB
Clonality	Polyclonal
Formulation	Purified polyclonal antibody supplied in PBS with 0.09% (W/V) sodium azide.
Storage Instructions	Maintain refrigerated at 2-8°C for up to 2 weeks. For long-term storage, store at -20°C in small aliquots to prevent freeze-thaw cycles.
Host	Rabbit
Uniprot ID	Q7Z6L1

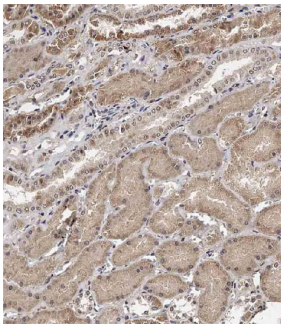
### Technical Details

Immunogen	This TECPR1 antibody is generated from rabbits immunized with a KLH conjugated synthetic peptide between 1094-1122 amino acids from the C-terminal region of human TECPR1.
Predicted Reactive Species	Bovine
Isotype	Rabbit IgG
Purification	This antibody is purified through a protein A column, followed by peptide affinity purification.
Suggested Dilutions	WB: 1:500 IHC-P: 1:100 FC: 1:10-1:50

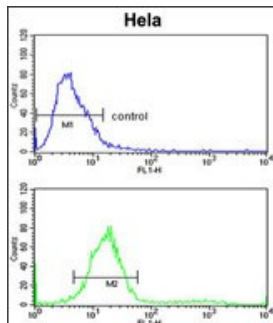
## Anti-TECPR1 Antibody (C-term) (A11073) Images



All lanes : Anti-TECPR1 Antibody (C-term) at 1:500 dilution  
Lane 1: HUVEC whole cell lysate  
Lane 2: A375 whole cell lysate  
Lysates/proteins at 20 µg per lane. Secondary Goat Anti-Rabbit IgG, (H+L), Peroxidase conjugated at 1/10000 dilution. Predicted band size : 130 kDa  
Blocking/Dilution buffer: 5% NFDM/TBST.



Immunohistochemical analysis of A11073 on paraffin-embedded Human kidney tissue. Tissue was fixed with formaldehyde at room temperature. Heat induced epitope retrieval was performed by EDTA buffer (pH9.0). Samples were incubated with primary antibody (1:100) for 1 hour at room temperature. Undiluted CRF Anti-Polyvalent HRP Polymer antibody was used as the secondary antibody.



TECPR1 Antibody (C-term) (Cat. #A11073) flow cytometric analysis of HeLa cells (bottom histogram) compared to a negative control cell (top histogram). FITC-conjugated goat-anti-rabbit secondary antibodies were used for the analysis.

### Submit a product review to Biocompare.com

Submit a review of this product to Biocompare.com to receive a \$20 Amazon.com giftcard! Your reviews help your fellow scientists make the right decisions. Thank you for your contribution.



Anti-TECPR1 Antibody (C-term)

For Research Use Only. Not for use in diagnostic procedures.