

Anti-POLR1E Antibody Picoband®

Catalog Number: A11077-2

About POLR1E

Predicted to enable DNA binding activity and RNA polymerase I general transcription initiation factor binding activity. Involved in nucleolar large rRNA transcription by RNA polymerase I and transcription initiation at RNA polymerase I promoter. Located in fibrillar center and nucleoplasm. Part of RNA polymerase I complex.

Overview

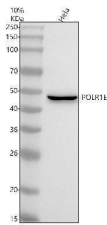
Product Name	Anti-POLR1E Antibody Picoband®
Reactive Species	Human
Description	Boster Bio Anti-POLR1E Antibody Picoband® catalog # A11077-2. Tested in WB, ICC/IF, IP, ELISA applications. This antibody reacts with Human. The brand Picoband indicates this is a premium antibody that guarantees superior quality, high affinity, and strong signals with minimal background in Western blot applications. Only our best-performing antibodies are designated as Picoband, ensuring unmatched performance.
Application	ELISA, IP, IF, ICC, WB
Clonality	Polyclonal
Formulation	Each vial contains 4 mg Trehalose, 0.9 mg NaCl, 0.2 mg Na ₂ HPO ₄ .
Storage Instructions	At -20°C for one year from date of receipt. After reconstitution, at 4°C for one month. It can also be aliquotted and stored frozen at -20°C for six months. Avoid repeated freezing and thawing.
Host	Rabbit
Uniprot ID	Q9GZS1

Technical Details

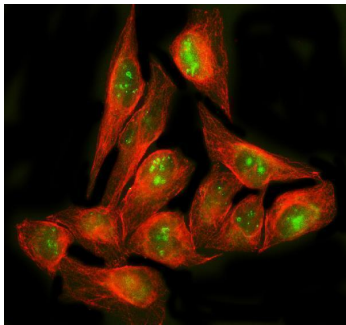
Immunogen	E.coli-derived human POLR1E recombinant protein (Position: M1-Q291). Human POLR1E shares 78.9% amino acid (aa) sequence identity with mouse POLR1E.
Recommended Detection Systems	Boster recommends Enhanced Chemiluminescent Kit with anti-Rabbit IgG (EK1002) for Western blot, and HRP Conjugated anti-Rabbit IgG Super Vision Assay Kit (SV0002-1) for ICC.
Form	Lyophilized
Concentration	Adding 0.2 ml of distilled water will yield a concentration of 500 ug/ml.
Purification	Immunogen affinity purified.
Suggested Dilutions	Western blot, 0.25-0.5 ug/ml, Human Immunocytochemistry/Immunofluorescence, 5 ug/ml, Human

	Immunoprecipitation, 2-4 ug/ml, Human ELISA, 0.1-0.5 ug/ml
--	---

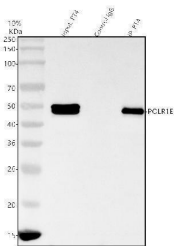
Anti-POLR1E Antibody Picoband® (A11077-2) Images



Western blot analysis of POLR1E using anti-POLR1E antibody (A11077-2). Electrophoresis was performed on a 10% SDS-PAGE gel at 80V (Stacking gel) / 120V (Resolving gel) for 2 hours. The sample well of each lane was loaded with 30 ug of sample under reducing conditions. Lane 1: human HeLa whole cell lysates. After electrophoresis, proteins were transferred to a nitrocellulose membrane at 150 mA for 50-90 minutes. Blocked the membrane with 5% non-fat milk/TBS for 1.5 hour at RT. The membrane was incubated with rabbit anti-POLR1E antigen affinity purified polyclonal antibody (A11077-2) at 0.5 ug/mL overnight at 4°C, then washed with TBS-0.1% Tween 3 times with 5 minutes each and probed with a goat anti-rabbit IgG-HRP secondary antibody at a dilution of 1:5000 for 1.5 hour at RT. The signal is developed using an ECL Plus Western Blotting Substrate (Catalog # AR1196-200) with Tanon 5200 system. A specific band was detected for POLR1E at approximately 47 kDa. The expected band size for POLR1E is at 47 kDa.



IF analysis of POLR1E using anti-POLR1E antibody (A11077-2) and anti-Beta Tubulin antibody (M01857-3). POLR1E was detected in an immunocytochemical section of U2OS cells. Enzyme antigen retrieval was performed using IHC enzyme antigen retrieval reagent (AR0022) for 15 mins. The cells were blocked with 10% goat serum. And then incubated with 5 ug/mL rabbit anti-POLR1E Antibody (A11077-2) and mouse anti-Beta Tubulin antibody (M01857-3) overnight at 4°C. DyLight®488 Conjugated Goat Anti-Rabbit IgG (BA1127) and Cy3 Conjugated Goat Anti-Mouse IgG (BA1031) were used as secondary antibody at 1:500 dilution and incubated for 30 minutes at 37°C. Visualize using a fluorescence microscope and filter sets appropriate for the label used.



Immunoprecipitating POLR1E in RT4 whole cell lysate. Western blot analysis of POLR1E using anti-POLR1E antibody (A11077-2). Lane 1: RT4 whole cell lysates (30ug), Lane 2: Rabbit control IgG instead of anti-POLR1E antibody in RT4 whole cell lysate, Lane 3: anti-POLR1E antibody (2ug) + RT4 whole cell lysate (500ug). After electrophoresis, proteins were transferred to a membrane. Then the membrane was incubated with rabbit anti-POLR1E antigen affinity purified polyclonal antibody (A11077-2) at a dilution of 0.5 ug/mL and probed with a goat anti-rabbit IgG-HRP secondary antibody (Catalog # BA1054). The signal is developed using ECL Plus Western Blotting Substrate (Catalog # AR1197). A specific band was detected for POLR1E at approximately 47 kDa. The expected band size for POLR1E is at 47 kDa.

Submit a review of this product to Biocompare.com to receive a \$20 Amazon.com giftcard! Your reviews help your fellow scientists make the right decisions. Thank you for your contribution.



Anti-POLR1E Antibody

For Research Use Only. Not for use in diagnostic procedures.