

Anti-Tamalin GRASP Antibody

Catalog Number: A11078

About GRASP

This antibody is suitable for Cancer, Immunology and Nuclear Signaling research. Tamalin, also named General receptor for phosphoinositides 1-associated scaffold protein (GRASP) is a PDZ (post-synaptic density protein/Drosophila disc large tumor suppressor/zo-1) domain-containing protein that interacts with group 1 metabotropic glutamate receptors (mGluRs). The PDZ domain-containing amino-terminal half of Tamalin binds directly to the class I PDZ-binding motif of group 1 mGluRs. The carboxyl-terminal half of Tamalin binds to cytohesins, which are guanine nucleotide exchange factors (GEFs) specific for the ADP-ribosylation factor (ARF) family of small GTP-binding proteins. Tamalin forms a protein complex with group 1 mGluRs at the post-synaptic site of specific neuronal cells and serves as a key scaffold protein that links a complex formation between mGluR1a and cytohesins. It is reported that Tamalin plays a key role in the association of group 1 mGluRs with the ARF-specific GEF proteins and contributes to intracellular trafficking and the macromolecular organization of group 1 mGluRs at synapses.

Overview

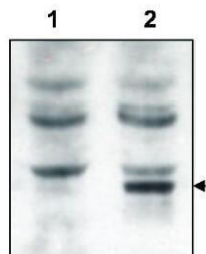
Product Name	Anti-Tamalin GRASP Antibody
Reactive Species	Human, Mouse
Description	Boster Bio Anti-Tamalin GRASP Antibody (Catalog # A11078). Tested in ELISA, WB applications. This antibody reacts with Human, Mouse.
Application	ELISA, IP, WB
Clonality	Polyclonal
Formulation	0.02 M Potassium Phosphate, 0.15 M Sodium Chloride, pH 7.2, 0.01% (w/v) Sodium Azide
Storage Instructions	Store vial at -20°C prior to opening. Aliquot contents and freeze at -20°C or below for extended storage. Avoid cycles of freezing and thawing. Centrifuge product if not completely clear after standing at room temperature. This product is stable for several weeks at 4°C as an undiluted liquid. Dilute only prior to immediate use. Expiration date is one (1) year from date of opening. (Ship on dry ice.)
Host	Rabbit
Uniprot ID	Q9JJA9

Technical Details

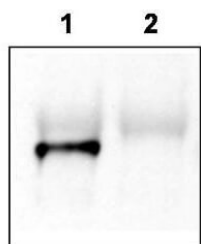
Immunogen	This affinity purified antibody was prepared from whole rabbit serum produced by repeated immunizations with a synthetic peptide corresponding to amino acids near the amino terminus of mouse Tamalin protein.
Predicted Reactive Species	Canine, Chicken, Chimpanzee
Isotype	IgG

Form	Liquid (sterile filtered)
Concentration	1.03 mg/mL by UV absorbance at 280 nm
Purification	This affinity purified antibody is directed against mouse Tamalin protein. The product was affinity purified from monospecific antiserum by immunoaffinity chromatography. A BLAST analysis was used to suggest cross-reactivity with Tamalin protein from rat based on a 94% homology with the immunizing sequence. Reactivity against homologues from other sources is not known.
Suggested Dilutions	ELISA: 1:4,000 - 1:20,000 IP: 1ug WB: 1:500 - 1:3,000 This affinity purified antibody has been tested for use in ELISA, western blotting, and immunoprecipitation. Specific conditions for reactivity should be optimized by the end user. Expect a band approximately 42 kDa in size corresponding to Tamalin protein by western blotting in the appropriate cell lysate or extract.

Anti-Tamalin GRASP Antibody (A11078) Images



Western blot using Boster's affinity purified anti-Tamalin to detect over-expressed Tamalin in HEK293 cells (lane 2, arrowhead). Lane 1 shows the non-transfected control. Cell extracts were electrophoresed and transferred to nitrocellulose. The membrane was probed with the primary antibody at a 1:2,000 dilution. Personal Communication, V. Coppola, CCR-NCI, Frederick, MD.



Mouse brain lysate was immunoprecipitated with anti-Tamalin antiserum. A blot was prepared and probed with affinity purified anti-Tamalin. Lane 1 is wild-type brain lysate; Lane 2 is Tamalin knock-out brain lysate. The membrane was probed with the primary antibody at a 1:1,000 dilution. Personal Communication, V. Coppola, CCR-NCI, Frederick, MD.

Submit a product review to Biocompare.com

Submit a review of this product to Biocompare.com to receive a \$20 Amazon.com giftcard! Your reviews help your fellow scientists make the right decisions. Thank you for your contribution.



Anti-Tamalin GRASP Antibody

For Research Use Only. Not for use in diagnostic procedures.