

## Anti-Slc37A2 Antibody

Catalog Number: A11124

### About SLC37A2

The Slc37 gene family consists of four members which have 10-12 predicted transmembrane domains and belong to the sugar-phosphate transporter superfamily. Recent experiments have demonstrated that Slc37A2 is a macrophage-specific gene selectively expressed in obese white adipose tissue. Its transcript is also expressed in spleen and thymus and the cell lines RAW264.7 and THP-1. Compared to wild-type mice, Slc37A2 mRNA is expressed at nine-fold higher levels in abdominal epididymal fat deposits of ob/ob mice, suggesting that it may be required to limit the contribution of macrophages to the inflammatory state present in obesity. Slc37A2 protein is post-translationally modified with the addition of N-linked glycans and migrates as a heterogeneous species of 50-75kDa.

### Overview

Product Name	Anti-Slc37A2 Antibody
Reactive Species	Human, Mouse, Rat
Description	Boster Bio Anti-Slc37A2 Antibody (Catalog # A11124). Tested in ELISA, WB, IHC-P, IF applications. This antibody reacts with Human, Mouse, Rat.
Application	ELISA, IF, IHC-P, WB
Clonality	Polyclonal
Formulation	Slc37A2 Antibody is supplied in PBS containing 0.02% sodium azide.
Storage Instructions	Slc37A2 antibody can be stored at 4°C for three months and -20°C, stable for up to one year. Avoid repeated freeze-thaw cycles. Antibodies should not be exposed to prolonged high temperatures.
Host	Rabbit
Uniprot ID	Q8TED4

### Technical Details

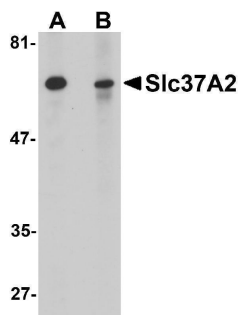
Immunogen	Slc37A2 antibody was raised against a 15 amino acid synthetic peptide near the center of human Slc37A2. The immunogen is located within amino acids 230 - 280 of Slc37A2.
Predicted Reactive Species	Bovine, Mouse
Isotype	IgG
Form	Liquid
Concentration	1 mg/mL
Purification	Slc37A2 Antibody is affinity chromatography purified via peptide column.

**Suggested Dilutions**

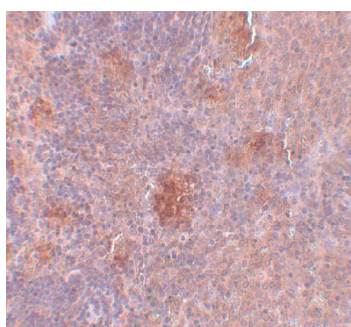
Slc37A2 antibody can be used for detection of Slc37A2 by Western blot at 1 ug/mL. Antibody can also be used for immunohistochemistry starting at 5 ug/mL. For immunofluorescence start at 20 ug/mL.

Antibody validated: Western Blot in mouse samples; Immunohistochemistry in rat samples and Immunofluorescence in rat samples. All other applications and species not yet tested. Optimal dilutions for each application should be determined by the researcher.

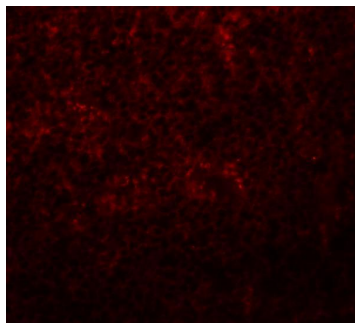
## Anti-Slc37A2 Antibody (A11124) Images



Western blot analysis of Slc37A2 in mouse spleen tissue lysate with Slc37A2 antibody at 1 ug/mL in the (A) absence and (B) presence of blocking peptide.



Immunohistochemistry of Slc37A2 in rat spleen tissue with Slc37A2 antibody at 5 ug/mL.



Immunofluorescence of Slc37A2 in rat spleen tissue with Slc37A2 antibody at 20 ug/mL.

### Submit a product review to [Biocompare.com](https://www.biocompare.com)

Submit a review of this product to [Biocompare.com](https://www.biocompare.com) to receive a \$20 Amazon.com giftcard! Your reviews help your fellow scientists make the right decisions. Thank you for your contribution.



Anti-Slc37A2 Antibody

For Research Use Only. Not for use in diagnostic procedures.