

## Anti-ZBED1 Antibody

Catalog Number: A11133

### About ZBED1

ZBED1, also known as DREF, is the human homolog of the Drosophila protein DREF, a transcriptional regulatory factor required for expression of genes involved in DNA replication and cell proliferation. RNA interference (RNAi) experiments targeting ZBED1 RNA resulted in the inhibition of S phase entry and reduction of histone H1 mRNA in HeLa cells, suggesting that ZBED1 also plays a role in cell proliferation in human cells. At least 22 ribosomal proteins (RPs) possess ZBED1 binding sites in their promoters; anti-ZBED1 RNAi also resulted in decreased RP gene expression. Immunoprecipitation analyses have shown that ZBED1 self-associates in vivo via a carboxyl-terminal hATC domain, and this self-association is required for nuclear localization and DNA binding.

### Overview

Product Name	Anti-ZBED1 Antibody
Reactive Species	Human, Mouse
Description	Boster Bio Anti-ZBED1 Antibody (Catalog # A11133). Tested in ELISA, WB applications. This antibody reacts with Human, Mouse.
Application	ELISA, WB
Clonality	Polyclonal
Formulation	ZBED1 Antibody is supplied in PBS containing 0.02% sodium azide.
Storage Instructions	ZBED1 antibody can be stored at 4°C for three months and -20°C, stable for up to one year. Avoid repeated freeze-thaw cycles. Antibodies should not be exposed to prolonged high temperatures.
Host	Rabbit
Uniprot ID	O96006

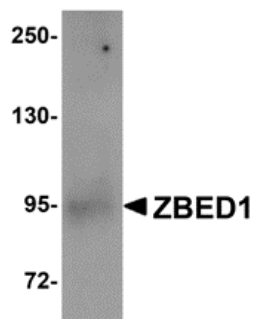
### Technical Details

Immunogen	ZBED1 antibody was raised against a 15 amino acid synthetic peptide from near the center of human ZBED1. The immunogen is located within amino acids 180 - 230 of ZBED1.
Predicted Reactive Species	Bovine, Mouse
Cross Reactivity	This antibody is predicted to have no cross-reactivity to ZBED2 or ZBED3.
Isotype	IgG
Form	Liquid
Concentration	1 mg/mL

Purification	ZBED1 Antibody is affinity chromatography purified via peptide column.
Suggested Dilutions	ZBED1 antibody can be used for detection of ZBED1 by Western blot at 1 ug/mL. Antibody validated: Western Blot in human samples. All other applications and species not yet tested. Optimal dilutions for each application should be determined by the researcher.

## Anti-ZBED1 Antibody (A11133) Images

---



Western blot analysis of ZBED1 in A549 cell lysate with ZBED1 antibody at 1 ug/mL.

---

### Submit a product review to Biocompare.com

Submit a review of this product to Biocompare.com to receive a \$20 Amazon.com giftcard! Your reviews help your fellow scientists make the right decisions. Thank you for your contribution.



Anti-ZBED1 Antibody

For Research Use Only. Not for use in diagnostic procedures.