

Anti-EFCAB4B CRACR2A Antibody

Catalog Number: A11139

About EFCAB4B

EFCAB4B, also known as Calcium release-activated calcium channel regulator 2A, is a novel Ca²⁺-binding EF-hand protein that is thought to play a key role in store-operated Ca²⁺ entry in T-cells by regulating CRAC channel activation. EFCAB4B acts as a cytoplasmic calcium-sensor that forms a complex with ORAI1 and STIM1 at the junctional regions between the plasma membrane and the endoplasmic reticulum upon low Ca²⁺ concentration. A closely related protein, EFCAB4A, is likely to play a similar role as EFCAB4B, but the detailed function of EFCAB4A is still under investigation.

Overview

Product Name	Anti-EFCAB4B CRACR2A Antibody
Reactive Species	Human, Mouse
Description	Boster Bio Anti-EFCAB4B CRACR2A Antibody (Catalog # A11139). Tested in ELISA, WB, IHC-P, IF applications. This antibody reacts with Human, Mouse.
Application	ELISA, IF, IHC-P, WB
Clonality	Polyclonal
Formulation	EFCAB4B Antibody is supplied in PBS containing 0.02% sodium azide.
Storage Instructions	EFCAB4B antibody can be stored at 4°C for three months and -20°C, stable for up to one year. Avoid repeated freeze-thaw cycles. Antibodies should not be exposed to prolonged high temperatures.
Host	Rabbit
Uniprot ID	Q9BSW2

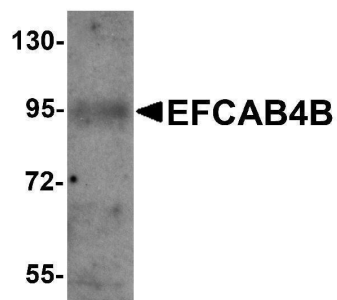
Technical Details

Immunogen	EFCAB4B antibody was raised against a 14 amino acid synthetic peptide near the carboxy terminus of human EFCAB4B. The immunogen is located within amino acids 640 - 690 of EFCAB4B.
Predicted Reactive Species	Bovine, Mouse
Isotype	IgG
Form	Liquid
Concentration	1 mg/mL
Purification	EFCAB4B Antibody is affinity chromatography purified via peptide column.
Suggested Dilutions	EFCAB4B antibody can be used for detection of EFCAB4B by Western blot at 1 ug/mL. Antibody can also be used for immunohistochemistry starting at 10 ug/mL. For immunofluorescence start at 20

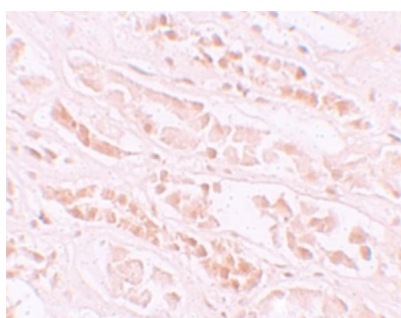
ug/mL.

Antibody validated: Western Blot in mouse samples; Immunohistochemistry in human samples and Immunofluorescence in human samples. All other applications and species not yet tested. Optimal dilutions for each application should be determined by the researcher.

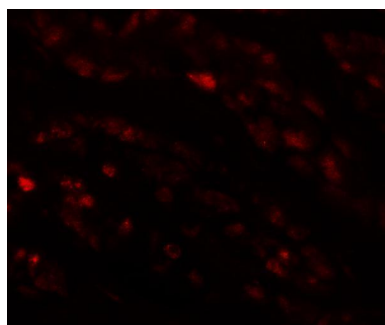
Anti-EFCAB4B CRACR2A Antibody (A11139) Images



Western blot analysis of EFCAB4B in mouse kidney tissue lysate with EFCAB4B antibody at 1 ug/mL.



Immunohistochemistry of EFCAB4B in human kidney tissue with EFCAB4B antibody at 10 ug/mL.



Immunofluorescence of EFCAB4B in human kidney tissue with EFCAB4B antibody at 20 ug/mL.

Submit a product review to [Biocompare.com](https://www.biocompare.com)

Submit a review of this product to [Biocompare.com](https://www.biocompare.com) to receive a \$20 Amazon.com giftcard! Your reviews help your fellow scientists make the right decisions. Thank you for your contribution.



Anti-EFCAB4B CRACR2A Antibody

For Research Use Only. Not for use in diagnostic procedures.