

Anti-Neudesin NENF Antibody

Catalog Number: A11147

About NENF

NENF is a secreted protein that is expressed in neurons but not glial cells of the brain. This protein has neurotrophic activity in primary cultured mouse neurons but not mitogenic activity in primary cultured mouse astrocytes. NENF activated mitogen-activated protein (MAP) and phosphatidylinositol-3 kinase pathways and could be inhibited by pertussis toxin but not receptor tyrosine kinases, suggesting that NENF acts through a Gi/Go-protein-coupled receptor.

Overview

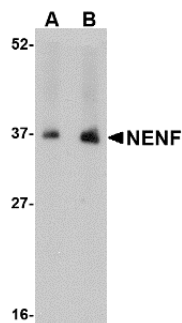
Product Name	Anti-Neudesin NENF Antibody
Reactive Species	Human, Mouse, Rat
Description	Boster Bio Anti-Neudesin NENF Antibody (Catalog # A11147). Tested in ELISA, WB, IHC-P, IF applications. This antibody reacts with Human, Mouse, Rat.
Application	ELISA, IF, IHC-P, WB
Clonality	Polyclonal
Formulation	NENF Antibody is supplied in PBS containing 0.02% sodium azide.
Storage Instructions	NENF antibody can be stored at 4°C for three months and -20°C, stable for up to one year. Avoid repeated freeze-thaw cycles. Antibodies should not be exposed to prolonged high temperatures.
Host	Rabbit
Uniprot ID	Q9UMX5

Technical Details

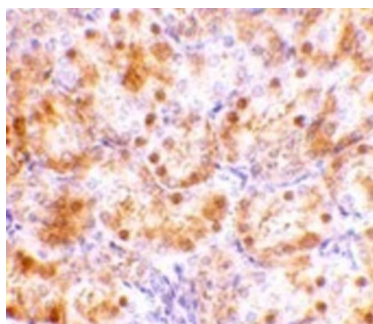
Immunogen	NENF antibody was raised against a 15 amino acid synthetic peptide from near the carboxy terminus of human NENF. The immunogen is located within the last 50 amino acids of NENF.
Predicted Reactive Species	Bovine
Isotype	IgG
Form	Liquid
Concentration	1 mg/mL
Purification	NENF Antibody is affinity chromatography purified via peptide column.
Suggested Dilutions	NENF antibody can be used for detection of NENF by Western blot at 1 - 2 ug/mL. Despite its predicted molecular weight of ~20kDa, NENF is observed at 37 kDa in SDS-PAGE. Antibody can also be used for immunohistochemistry starting at 10 ug/mL. For immunofluorescence start at 20 ug/mL.

Antibody validated: Western Blot in human samples; Immunohistochemistry in rat samples and Immunofluorescence in rat samples. All other applications and species not yet tested. Optimal dilutions for each application should be determined by the researcher.

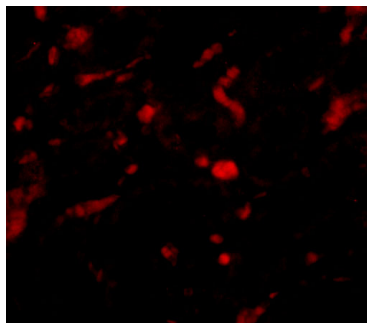
Anti-Neudesin NENF Antibody (A11147) Images



Western blot analysis of NENF in human kidney tissue lysate with NENF antibody at (A) 1 and (B) 2 ug/mL.



Immunohistochemistry of NENF in rat kidney tissue with NENF antibody at 10 ug/mL.



Immunofluorescence of NENF in rat kidney tissue with NENF antibody at 20 ug/mL.

Submit a product review to [Biocompare.com](https://www.biocompare.com)

Submit a review of this product to [Biocompare.com](https://www.biocompare.com) to receive a \$20 Amazon.com giftcard! Your reviews help your fellow scientists make the right decisions. Thank you for your contribution.



Anti-Neudesin NENF Antibody

For Research Use Only. Not for use in diagnostic procedures.