

## Anti-Palmdelphin PALMD Antibody

Catalog Number: A11148

### About PALMD

Palmdelphin (PALMD) is a member of the paralemmin families that are lipid-anchored proteins having a role in the cell shape control and cell dynamics (1,2). While Paralemmin proteins typically anchor to the cytoplasm through via palmytoylation and prenylation, PALMD is found predominantly in the cytosol (3). PALMD is targeted to the nucleus to induce apoptosis in response to DNA damage (3-5). Abnormal genetic alterations in PALMD are observed in many malignant tumors (5).

### Overview

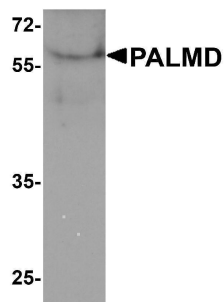
Product Name	Anti-Palmdelphin PALMD Antibody
Reactive Species	Human
Description	Boster Bio Anti-Palmdelphin PALMD Antibody (Catalog # A11148). Tested in ELISA, WB, IHC-P applications. This antibody reacts with Human.
Application	ELISA, IHC-P, WB
Clonality	Polyclonal
Formulation	PALMD antibody is supplied in PBS containing 0.02% sodium azide.
Storage Instructions	PALMD antibody can be stored at 4°C for three months and -20°C, stable for up to one year.
Host	Rabbit
Uniprot ID	Q9NP74

### Technical Details

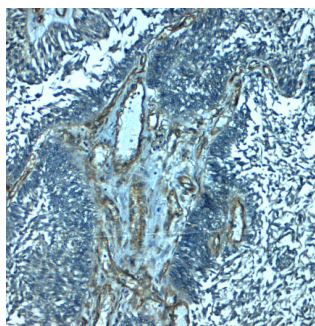
Immunogen	PALMD antibody was raised against a 15 amino acid peptide near the carboxy terminus of human PALMD. The immunogen is located within amino acids 460 - 510 of PALMD.
Predicted Reactive Species	Bovine, Mouse, Pig, Rat
Cross Reactivity	PALMD antibody is human specific. At least two isoforms are known to exist.
Isotype	IgG
Form	Liquid
Concentration	1 mg/mL
Purification	PALMD antibody is affinity chromatography purified via peptide column.
Suggested Dilutions	PALMD antibody can be used for detection of PALMD by Western blot at 1 - 2 ug/ml. Antibody can also be used for immunohistochemistry starting at 2.5 ug/mL.

Antibody validated: Western Blot in human samples and Immunohistochemistry in human samples.  
All other applications and species not yet tested. Optimal dilutions for each application should be determined by the researcher.

## Anti-Palmdelphin PALMD Antibody (A11148) Images



Western blot analysis of PALMD in human bladder tissue lysate with PALMD antibody at 1 ug/ml.



Immunohistochemistry of PALMD in human bladder tissue with PALMD antibody at 2.5 ug/mL.

### Submit a product review to [Biocompare.com](https://www.biocompare.com)

Submit a review of this product to [Biocompare.com](https://www.biocompare.com) to receive a \$20 Amazon.com giftcard! Your reviews help your fellow scientists make the right decisions. Thank you for your contribution.



Anti-Palmdelphin PALMD Antibody

For Research Use Only. Not for use in diagnostic procedures.