

Anti-ZBTB40 Antibody

Catalog Number: A11168-1

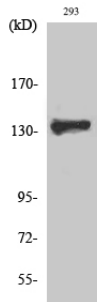
Overview

Product Name	Anti-ZBTB40 Antibody
Reactive Species	Human, Mouse
Description	Boster Bio Anti-ZBTB40 Antibody catalog # A11168-1. Tested in WB, IHC, IF, ELISA applications. This antibody reacts with Human, Mouse.
Application	ELISA, IF, IHC, WB
Clonality	Polyclonal
Formulation	Liquid in PBS containing 50% glycerol, 0.5% stabilizing protein and 0.02% sodium azide. This antibody is supplied in a stabilized formulation. Compatibility with conjugation reactions depends on the chemistry of the conjugation method used. For conjugation methods that are not compatible with the stabilizing components present in this formulation, a carrier-free antibody format is required.
Storage Instructions	Store at -20°C for one year. For short term storage and frequent use, store at 4°C for up to one month. Avoid repeated freeze-thaw cycles.
Host	Rabbit
Uniprot ID	Q9NUA8

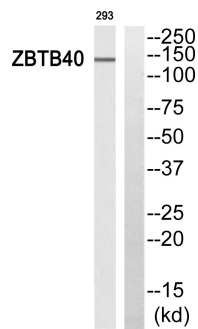
Technical Details

Immunogen	The antiserum was produced against synthesized peptide derived from human ZBTB40. AA range:1121-1170
Isotype	IgG
Form	Liquid
Concentration	1 mg/ml
Purification	Immunogen affinity purified
Suggested Dilutions	WB 1:500-1:2000 IHC 1:100-1:300 ELISA 1:10000 IF 1:50-200

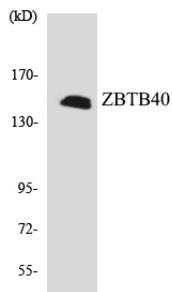
Anti-ZBTB40 Antibody (A11168-1) Images



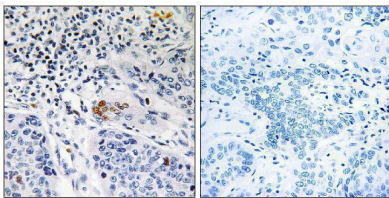
Western Blot analysis of various cells using ZBTB40 Polyclonal Antibody. Secondary antibody was diluted at 1:20000 cells nucleus extracted by Minute TM Cytoplasmic and Nuclear Fractionation kit .



Western blot analysis of ZBTB40 Antibody. The lane on the right is blocked with the ZBTB40 peptide.



Western blot analysis of the lysates from HUVEC cells using ZBTB40 antibody.



Immunohistochemistry analysis of paraffin-embedded human lung carcinoma tissue, using ZBTB40 Antibody. The picture on the right is blocked with the synthesized peptide.

Submit a product review to Biocompare.com

Submit a review of this product to Biocompare.com to receive a \$20 Amazon.com giftcard! Your reviews help your fellow scientists make the right decisions. Thank you for your contribution.



Anti-ZBTB40 Antibody

For Research Use Only. Not for use in diagnostic procedures.