

Anti-CLUH Antibody

Catalog Number: A11184

About CLUH

This gene belongs to the chemokine-like factor gene superfamily, a novel family that is similar to the chemokine and the transmembrane 4 superfamilies of signaling molecules. The protein encoded by this gene may play an important role in testicular development. Alternatively spliced transcript variants encoding different isoforms have been identified. Naturally occurring read-through transcription occurs between this locus and the neighboring locus CKLF (chemokine-like factor).

Han W., Genomics 81:609-617(2003).

Wang L., Submitted (NOV-2002) to the EMBL/GenBank/DDBJ databases.

Overview

Product Name	Anti-CLUH Antibody
Reactive Species	Human, Mouse
Description	Boster Bio Anti-CLUH Antibody catalog # A11184. Tested in WB,IHC,ICC/IF applications. This antibody reacts with Human,Mouse.
Application	IF, IHC, ICC, WB
Clonality	Polyclonal
Formulation	Rabbit IgG, 1mg/ml in PBS with 0.02% sodium azide, 50% glycerol, pH7.2
Storage Instructions	Store at -20°C for one year. For short term storage and frequent use, store at 4°C for up to one month. Avoid repeated freeze-thaw cycles.
Host	Rabbit
Uniprot ID	O75153

Technical Details

Immunogen	Synthesized peptide derived from human PIGQ protein.
Predicted Reactive Species	Chimpanzee, Drosophila, Macaque
Isotype	IgG
Form	Liquid
Concentration	1 mg/ml
Purification	The antibody was affinity-purified from rabbit antiserum by affinity-chromatography using epitope-specific immunogen and the purity is > 95% (by SDS-PAGE).

Suggested Dilutions

Dilute the sample so that the expected range of concentrations fall within the detection range of this kit.

If the expected range of concentration is unknown, a pilot test should be conducted to decide the optimal dilution ratio for your samples.

Some PubMed article(s) citing the expression level of this target are as follows:

Boster Bio's internal QC testing used:

WB: 1:1000-1:4000

IHC: 1:50-1:200

ICC/IF: 1:50-1:200

Anti-CLUH Antibody (A11184) Images

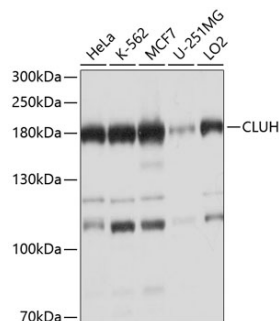


Figure 1. Western blotting validation for Anti-CLUH Antibody A11184

Western blot analysis of extracts of various cells

Submit a product review to Biocompare.com

Submit a review of this product to Biocompare.com to receive a \$20 Amazon.com giftcard! Your reviews help your fellow scientists make the right decisions. Thank you for your contribution.



Anti-CLUH Antibody