

Anti-KIAA0182/GSE1 Antibody Picoband®

Catalog Number: A11186-1

About GSE1

This gene encodes a proline-rich protein with coiled coil domains that may be a subunit of a BRAF35-HDAC (BHC) histone deacetylase complex. This gene may function as an oncogene in breast cancer and enhanced expression of the encoded protein has been observed in breast cancer patients.

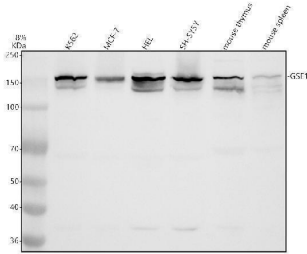
Overview

Product Name	Anti-KIAA0182/GSE1 Antibody Picoband®
Reactive Species	Human, Mouse
Description	Boster Bio Anti-KIAA0182/GSE1 Antibody Picoband® catalog # A11186-1. Tested in WB, ICC/IF, IP, ELISA applications. This antibody reacts with Human, Mouse. The brand Picoband indicates this is a premium antibody that guarantees superior quality, high affinity, and strong signals with minimal background in Western blot applications. Only our best-performing antibodies are designated as Picoband, ensuring unmatched performance.
Application	ELISA, IP, IF, ICC, WB
Clonality	Polyclonal
Formulation	Each vial contains 4 mg Trehalose, 0.9 mg NaCl, 0.2 mg Na ₂ HPO ₄ .
Storage Instructions	At -20°C for one year from date of receipt. After reconstitution, at 4°C for one month. It can also be aliquotted and stored frozen at -20°C for six months. Avoid repeated freezing and thawing.
Host	Rabbit
Uniprot ID	Q14687

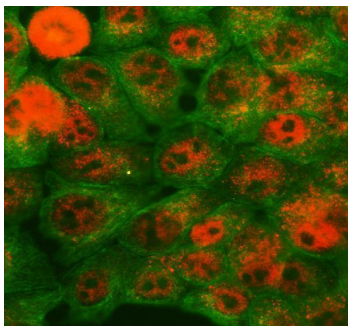
Technical Details

Immunogen	E.coli-derived human KIAA0182/GSE1 recombinant protein (Position: L445-A1191).
Form	Lyophilized
Concentration	Adding 0.2 ml of distilled water will yield a concentration of 500 ug/ml.
Purification	Immunogen affinity purified.
Suggested Dilutions	Western blot, 0.25-0.5 ug/ml, Human, Mouse Immunocytochemistry/Immunofluorescence, 5 ug/ml, Human Immunoprecipitation, 0.5-2 ug/ml, Human ELISA, 0.1-0.5 ug/ml

Anti-KIAA0182/GSE1 Antibody Picoband® (A11186-1) Images



Western blot analysis of KIAA0182/GSE1 using anti-KIAA0182/GSE1 antibody (A11186-1). Electrophoresis was performed on a 8% SDS-PAGE gel at 80V (Stacking gel) / 120V (Resolving gel) for 2 hours. The sample well of each lane was loaded with 30 ug of sample under reducing conditions. Lane 1: human K562 whole cell lysates, Lane 2: human MCF-7 whole cell lysates, Lane 3: human HEL whole cell lysates, Lane 4: human SH-SY5Y whole cell lysates, Lane 5: mouse thymus tissue lysates, Lane 6: mouse spleen tissue lysates. After electrophoresis, proteins were transferred to a nitrocellulose membrane at 150 mA for 50-90 minutes. Blocked the membrane with 5% non-fat milk/TBS for 1.5 hour at RT. The membrane was incubated with rabbit anti-KIAA0182/GSE1 antigen affinity purified polyclonal antibody (A11186-1) at 0.5 ug/mL overnight at 4°C, then washed with TBS-0.1% Tween 3 times with 5 minutes each and probed with a goat anti-rabbit IgG-HRP secondary antibody at a dilution of 1:5000 for 1.5 hour at RT. The signal is developed using an ECL Plus Western Blotting Substrate (Catalog # AR1196-200) with Tanon 5200 system. A specific band was detected for KIAA0182/GSE1 at approximately 150 kDa. The expected band size for KIAA0182/GSE1 is at 136 kDa.



IF analysis of KIAA0182/GSE1 using anti-KIAA0182/GSE1 antibody (A11186-1) and anti-Alpha Tubulin antibody (M03989-3). KIAA0182/GSE1 was detected in an immunocytochemical section of MCF-7 cells. Enzyme antigen retrieval was performed using IHC enzyme antigen retrieval reagent (AR0022) for 15 mins. The cells were blocked with 10% goat serum. And then incubated with 5 ug/mL rabbit anti-KIAA0182/GSE1 Antibody (A11186-1) and mouse anti-Alpha Tubulin antibody (M03989-3) overnight at 4°C. Cy3 Conjugated Goat Anti-Rabbit IgG (BA1032) and Fluoro488 Conjugated Goat Anti-Mouse IgG (BA1126) were used as secondary antibody at 1:500 dilution and incubated for 30 minutes at 37°C. Visualize using a fluorescence microscope and filter sets appropriate for the label used.



Immunoprecipitating KIAA0182/GSE1 in MCF-7 whole cell lysate. Western blot analysis of KIAA0182/GSE1 using anti-KIAA0182/GSE1 antibody (A11186-1). Lane 1: MCF-7 whole cell lysates (30ug), Lane 2: Rabbit control IgG instead of anti-KIAA0182/GSE1 antibody in MCF-7 whole cell lysate, Lane 3: anti-KIAA0182/GSE1 antibody (2ug) + MCF-7 whole cell lysate (500ug). After electrophoresis, proteins were transferred to a membrane. Then the membrane was incubated with rabbit anti-KIAA0182/GSE1 antigen affinity purified polyclonal antibody (A11186-1) at a dilution of 0.5 ug/mL and probed with a goat anti-rabbit IgG-HRP secondary antibody (Catalog # BA1054). The signal is developed using ECL Plus Western Blotting Substrate (Catalog # AR1197). A specific band was detected for KIAA0182/GSE1 at

approximately 150 kDa. The expected band size for KIAA0182/GSE1 is at 136 kDa.

Submit a product review to Biocompare.com

Submit a review of this product to Biocompare.com to receive a \$20 Amazon.com giftcard! Your reviews help your fellow scientists make the right decisions. Thank you for your contribution.



Anti-KIAA0182/GSE1 Antibody

For Research Use Only. Not for use in diagnostic procedures.