

## Anti-RUSC1 Antibody

Catalog Number: A11204

### About RUSC1

RUSC1, also known as NESCA, shares with the related protein RUSC2 a common domain structure of RUN, leucine zipper and SH3 domain in addition to over 30% amino acid identity. RUSC1 is an adapter protein that can bind to the TrkA receptor and is necessary in the NGF-induced neurite growth of PC12 cells. RUSC1 has also been shown to interact with IkappaB kinase- (IKK-) gamma, the regulatory subunit of the IKK complex that is required for NF-kappaB activation in many signaling pathways such as TNF-R or the TLR pathways. RUSC1 can also bind to the E3 ubiquitin ligase TRAF6, which then catalyzes RUSC1 polyubiquitination. Since overexpression of RUSC1 strongly inhibits TRAF6-mediated polyubiquitination of IKK-gamma, RUSC1 may be a link in the IKK-gamma-mediated NF-kappaB activation pathway.

### Overview

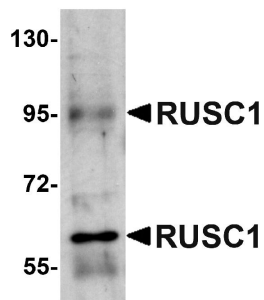
Product Name	Anti-RUSC1 Antibody
Reactive Species	Human, Mouse, Rat
Description	Boster Bio Anti-RUSC1 Antibody (Catalog # A11204). Tested in ELISA, WB applications. This antibody reacts with Human, Mouse, Rat.
Application	ELISA, WB
Clonality	Polyclonal Clone: SK7
Formulation	RUSC1 Antibody is supplied in PBS containing 0.02% sodium azide.
Storage Instructions	RUSC1 antibody can be stored at 4°C for three months and -20°C, stable for up to one year. Avoid repeated freeze-thaw cycles. Antibodies should not be exposed to prolonged high temperatures.
Host	Rabbit
Uniprot ID	Q9BVN2

### Technical Details

Immunogen	RUSC1 antibody was raised against a 17 amino acid synthetic peptide from near the carboxy terminus of human RUSC1. The immunogen is located within amino acids 780 - 830 of RUSC1.
Predicted Reactive Species	Rat
Cross Reactivity	PJA1 antibody is human, mouse and rat reactive. At least two isoforms of PJA1 are known to exist; this antibody will detect both isoforms.
Isotype	IgG
Form	Liquid
Concentration	1 mg/mL

Purification	RUSC1 Antibody is affinity chromatography purified via peptide column.
Suggested Dilutions	<p>Dilute the sample so that the expected range of concentrations fall within the detection range of this kit.</p> <p>If the expected range of concentration is unknown, a pilot test should be conducted to decide the optimal dilution ratio for your samples.</p> <p>Some PubMed article(s) citing the expression level of this target are as follows:</p> <p>Boster Bio's internal QC testing used:</p> <p>RUSC1 antibody can be used for detection of RUSC1 by Western blot at 1 ug/mL.</p> <p>Antibody validated: Western Blot in mouse samples. All other applications and species not yet tested. Optimal dilutions for each application should be determined by the researcher.</p>

## Anti-RUSC1 Antibody (A11204) Images



Western blot analysis of RUSC1 in A-20 cell lysate with RUSC1 antibody at 1 ug/mL.

## Submit a product review to Biocompare.com

Submit a review of this product to Biocompare.com to receive a \$20 Amazon.com giftcard! Your reviews help your fellow scientists make the right decisions. Thank you for your contribution.



Anti-RUSC1 Antibody