

Anti-BD1L1 BOD1L1 Antibody

Catalog Number: A11220

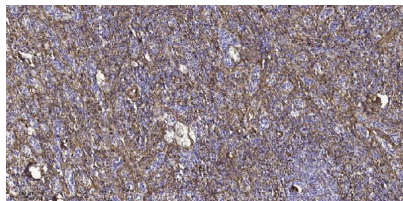
Overview

Product Name	Anti-BD1L1 BOD1L1 Antibody
Reactive Species	Human
Description	Boster Bio Anti-BD1L1 BOD1L1 Antibody catalog # A11220. Tested in IHC, IF applications. This antibody reacts with Human.
Application	IF, IHC
Clonality	Polyclonal
Formulation	Liquid form in PBS containing 50% glycerol, and 0.02% sodium azide.
Storage Instructions	Store at -20°C for one year. For short term storage and frequent use, store at 4°C for up to one month. Avoid repeated freeze-thaw cycles.
Host	Rabbit
Uniprot ID	Q8NFC6

Technical Details

Immunogen	Synthesized peptide derived from human protein at AA range: 1280-1360
Isotype	IgG
Form	Liquid
Concentration	1 mg/ml
Purification	BD1L1 antibody was affinity-purified from rabbit antiserum by affinity-chromatography using epitope-specific immunogen.
Suggested Dilutions	IHC 1:50-300 IF 1:50-200

Anti-BD1L1 BOD1L1 Antibody (A11220) Images



Immunohistochemical analysis of paraffin-embedded human spleen tissue. 1, primary Antibody was diluted at 1:200 (4° overnight). 2, Sodium citrate pH 6.0 was used for antigen retrieval (>98°C, 20min). 3, Secondary antibody was diluted at 1:200

Submit a product review to Biocompare.com

Submit a review of this product to Biocompare.com to receive a \$20 Amazon.com giftcard! Your reviews help your fellow scientists make the right decisions. Thank you for your contribution.



Anti-BD1L1 BOD1L1 Antibody

For Research Use Only. Not for use in diagnostic procedures.