

## Anti-CMPK2 Antibody

Catalog Number: A11251

### About CMPK2

UMP-CMP kinase 2 (CMPK2) is the first nucleoside monophosphate kinase that has been identified in human mitochondria. It is a component of the salvage pathway for nucleotide synthesis that may participate in terminal differentiation of monocytic cells. There are two distinct domains of CMPK2: the N-terminal domain with unknown function and the C-terminal domain with the kinase function, suggesting that CMPK2 may be a bifunctional protein with other biological functions in addition to its UMP-CMP kinase activity. CMPK2 may participate in dUTP and dCTP synthesis and is responsible for phosphorylation of dCMP and dUMP in mitochondria. CMPK2 is actively involved in macrophage activation and the inflammatory response

### Overview

Product Name	Anti-CMPK2 Antibody
Reactive Species	Human, Mouse, Rat
Description	Boster Bio Anti-CMPK2 Antibody (Catalog # A11251). Tested in ELISA, WB, IF applications. This antibody reacts with Human, Mouse, Rat.
Application	ELISA, IF, WB
Clonality	Polyclonal
Formulation	CMPK2 Antibody is supplied in PBS containing 0.02% sodium azide.
Storage Instructions	CMPK2 antibody can be stored at 4°C for three months and -20°C, stable for up to one year. Avoid repeated freeze-thaw cycles. Antibodies should not be exposed to prolonged high temperatures.
Host	Rabbit
Uniprot ID	Q5EBM0

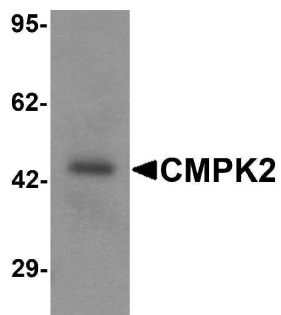
### Technical Details

Immunogen	CMPK2 antibody was raised against a 19 amino acid synthetic peptide near the carboxy terminus of human CMPK2. The immunogen is located within amino acids 370 - 420 of CMPK2.
Cross Reactivity	Multiple isoforms of CMPK2 are known to exist.
Isotype	IgG
Form	Liquid
Concentration	1 mg/mL
Purification	CMPK2 Antibody is affinity chromatography purified via peptide column.

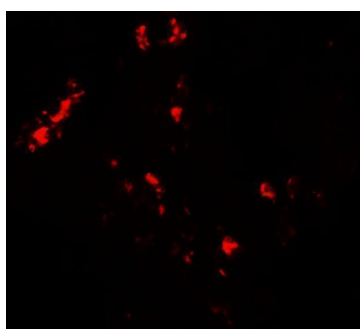
**Suggested Dilutions**

CMPK2 antibody can be used for detection of CMPK2 by Western blot at 1 ug/mL. For immunofluorescence start at 20 ug/mL.  
Antibody validated: Western Blot in rat samples and Immunofluorescence in human samples. All other applications and species not yet tested. Optimal dilutions for each application should be determined by the researcher.

## Anti-CMPK2 Antibody (A11251) Images



Western blot analysis of CMPK2 in rat lung tissue lysate with CMPK2 antibody at 1 ug/mL



Immunofluorescence of CMPK2 in human lung tissue with CMPK2 antibody at 20 ug/mL.

### Submit a product review to [Biocompare.com](https://www.biocompare.com)

Submit a review of this product to [Biocompare.com](https://www.biocompare.com) to receive a \$20 Amazon.com giftcard! Your reviews help your fellow scientists make the right decisions. Thank you for your contribution.



Anti-CMPK2 Antibody

For Research Use Only. Not for use in diagnostic procedures.