

Anti-DEDD2 (DED4) Antibody

Catalog Number: A11263

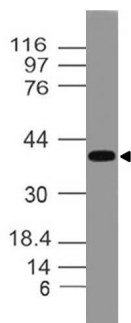
Overview

| | |
|----------------------|--|
| Product Name | Anti-DEDD2 (DED4) Antibody |
| Reactive Species | Canine, Human, Mouse, Rat |
| Description | Boster Bio Anti-DEDD2 (DED4) Antibody (Catalog# A11263). Tested in WB application(s). This antibody reacts with Canine, Rat, Mouse, Human. |
| Application | WB |
| Clonality | Polyclonal |
| Formulation | 50 ul sera |
| Storage Instructions | Store the antibody at 4°C, stable for 6 months. For long-term storage, store at -20°C. Avoid repeated freeze and thaw cycles. |
| Host | Rabbit |
| Uniprot ID | Q8WXF8 |

Technical Details

| | |
|----------------------------|--|
| Immunogen | A synthetic peptide of DEDD2 (DED4) protein (amino acids 210-228 GPALEQQVASRRPQALARQ) |
| Predicted Reactive Species | Mouse, Rat |
| Isotype | Rabbit IgG |
| Form | Liquid |
| Concentration | 0.5-1mg/ml, actual concentration vary by lot. Use suggested dilution ratio to decide dilution procedure. |
| Suggested Dilutions | WB: 1:1000-1:5000 |

Anti-DEDD2 (DED4) Antibody (A11263) Images



Western blot analysis of DEDD2 (DED4). Anti-DEDD2 (DED4) antibody was used with 1:1000 dilution on h Heart lysate.

Submit a product review to Biocompare.com

Submit a review of this product to Biocompare.com to receive a \$20 Amazon.com giftcard! Your reviews help your fellow scientists make the right decisions. Thank you for your contribution.



Anti-DEDD2 (DED4) Antibody

For Research Use Only. Not for use in diagnostic procedures.